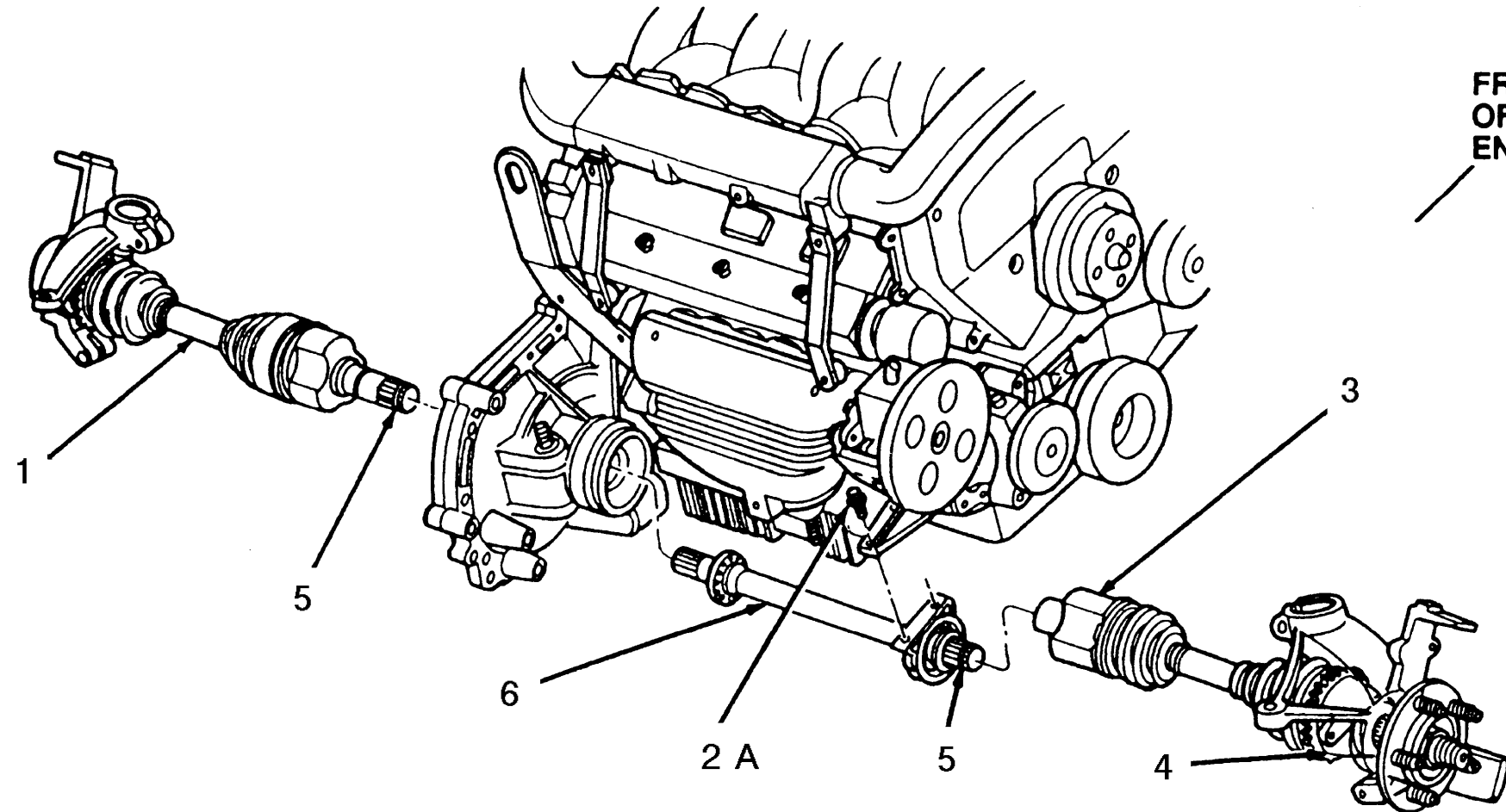


FRONT  
OF  
ENGINE



1. Front wheel driveshaft and joint
2. Bolt (2 req'd)
3. Inboard CV joint housing (part of 3B436)
4. Front wheel driveshaft joint

5. Driveshaft bearing retainer circlip
6. Halfshaft
- A. Tighten to 21-32 N.m (16-23 lb-ft)