

10

20

30

40

50

60

70

10

20

30

40

50

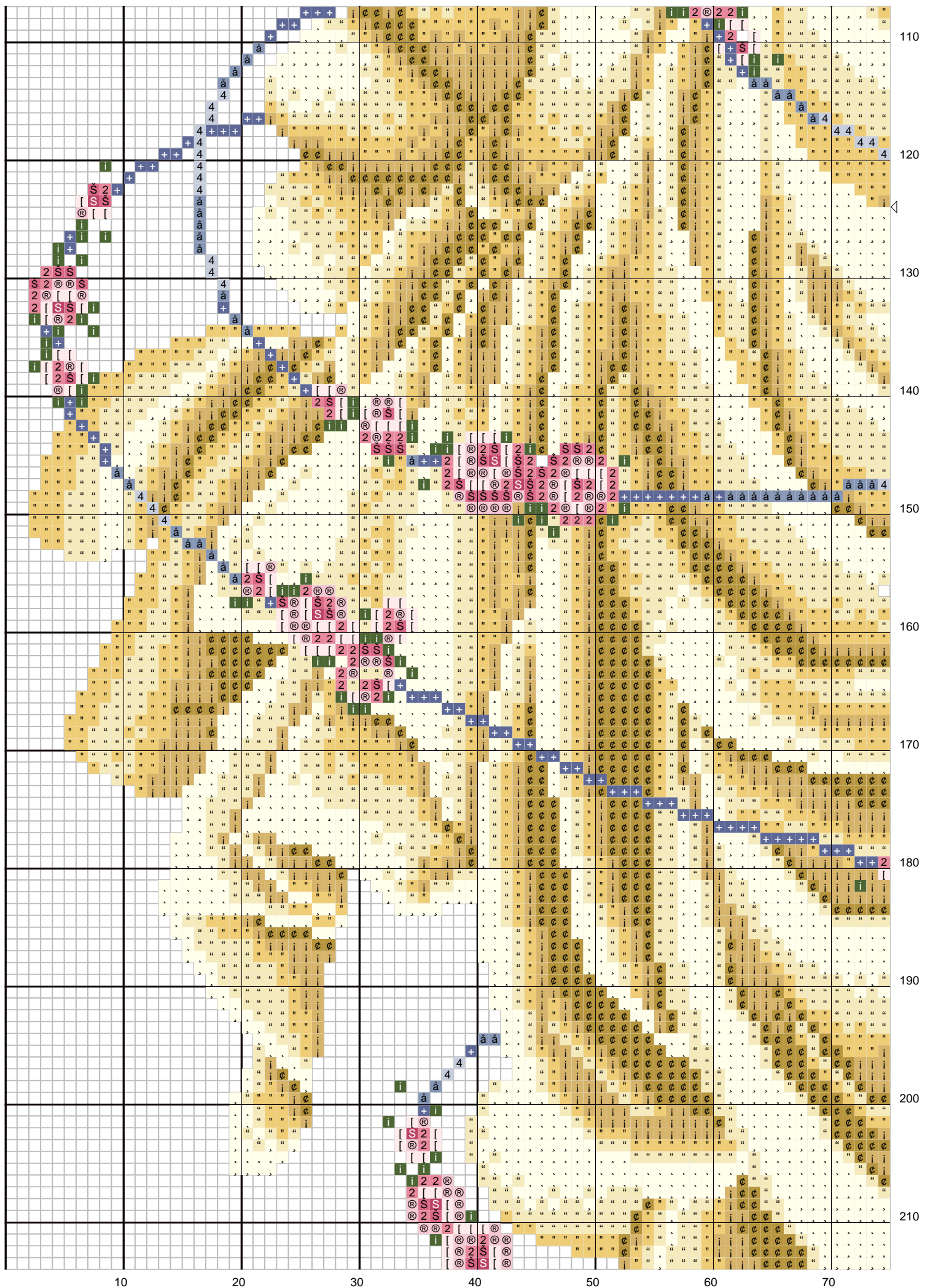
60

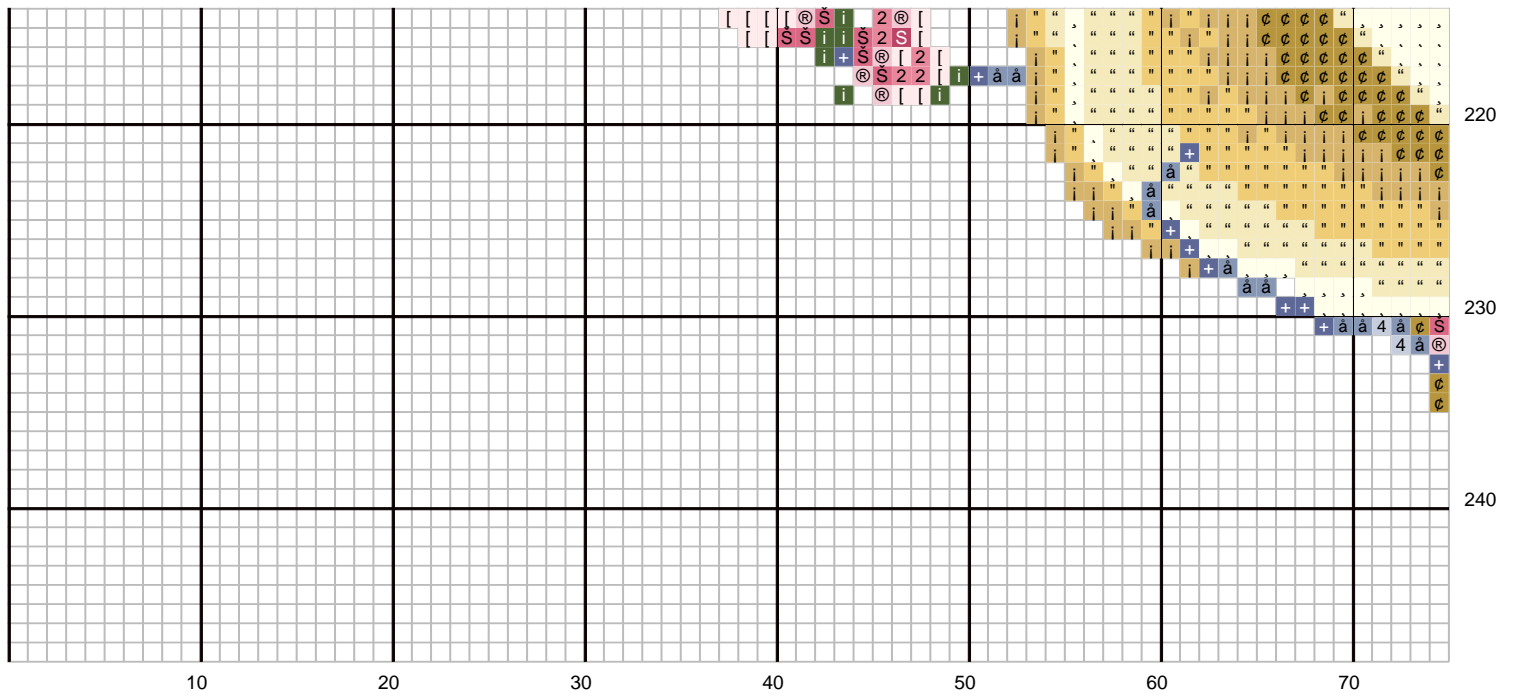
70

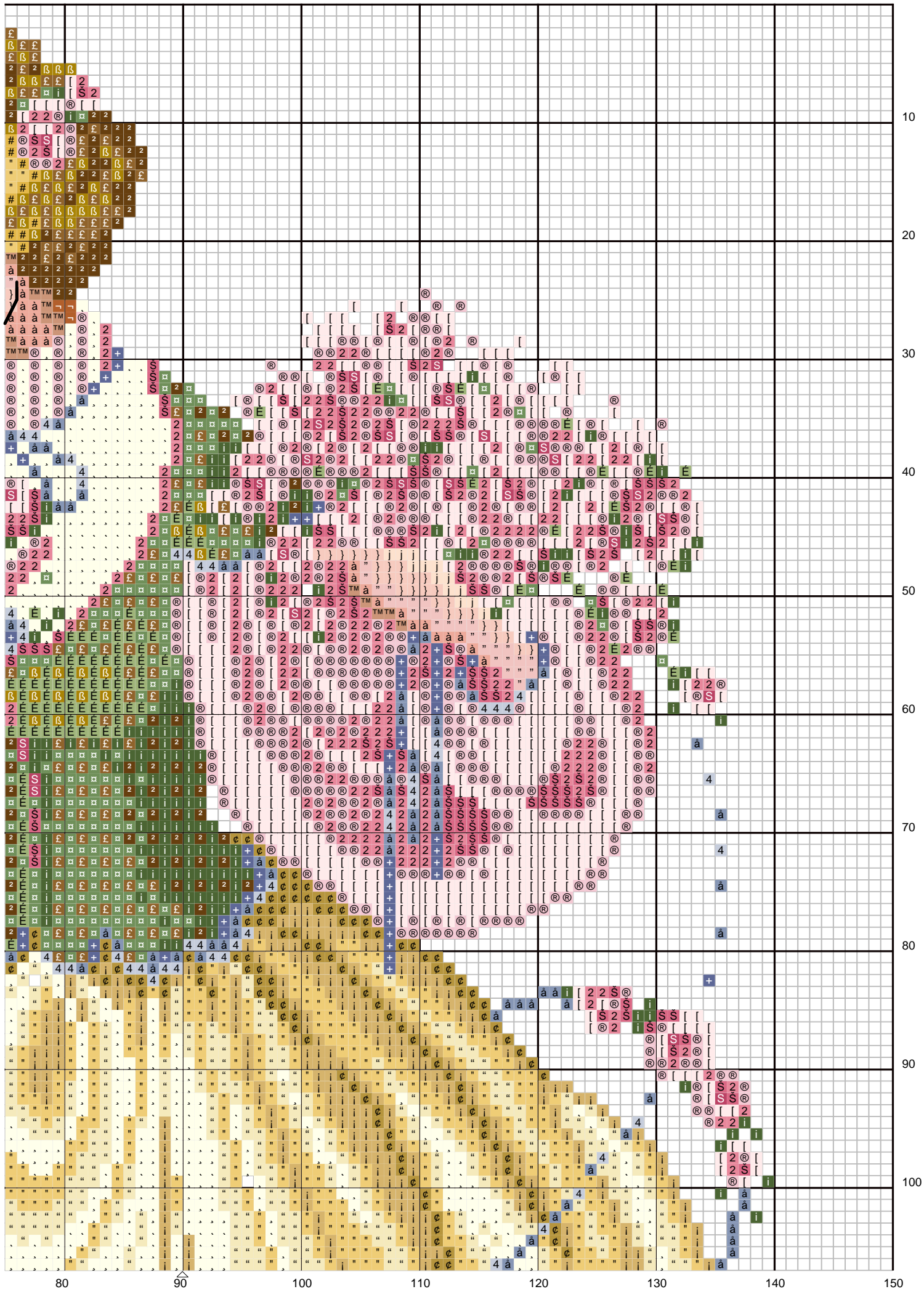
80

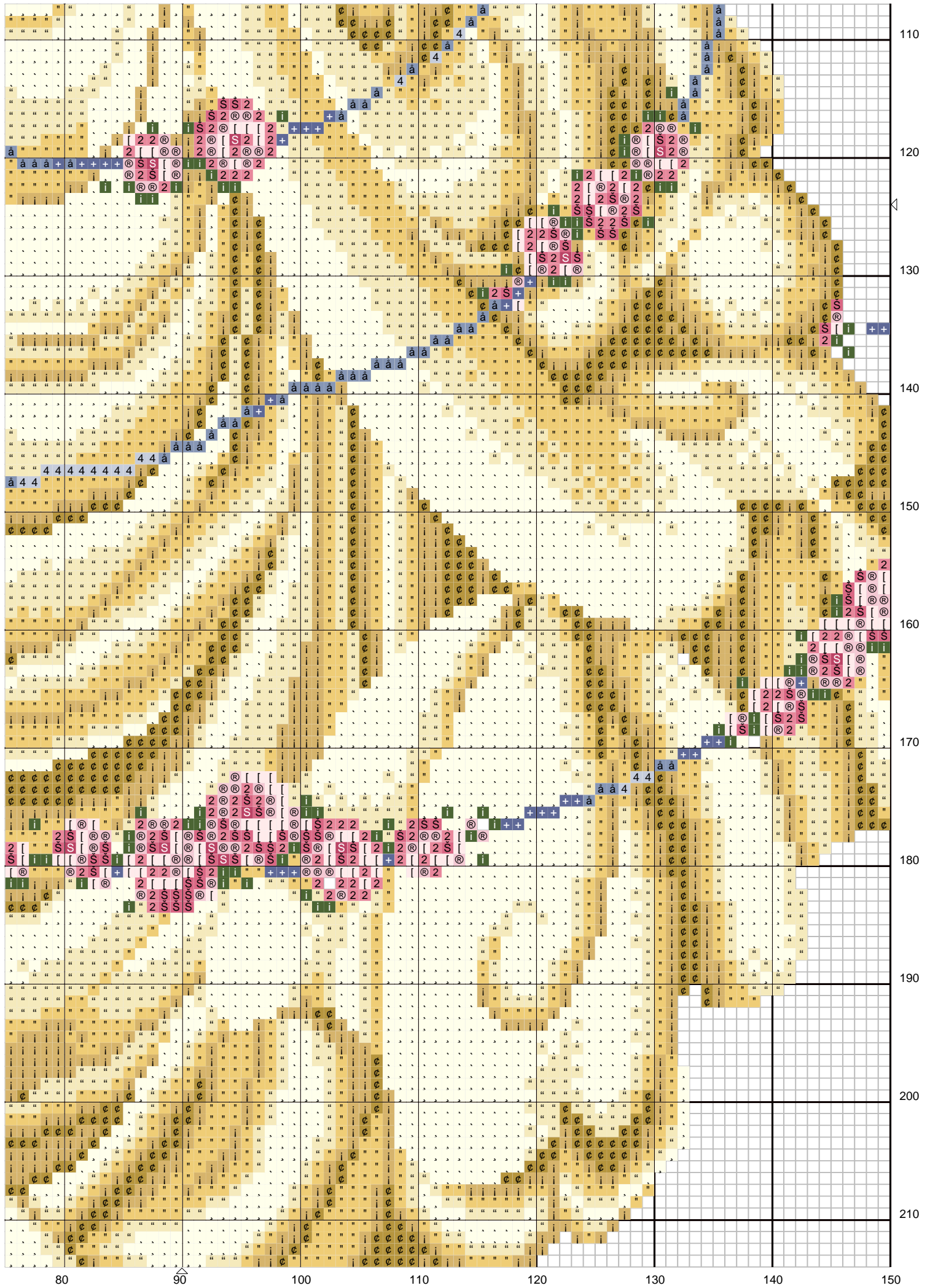
90

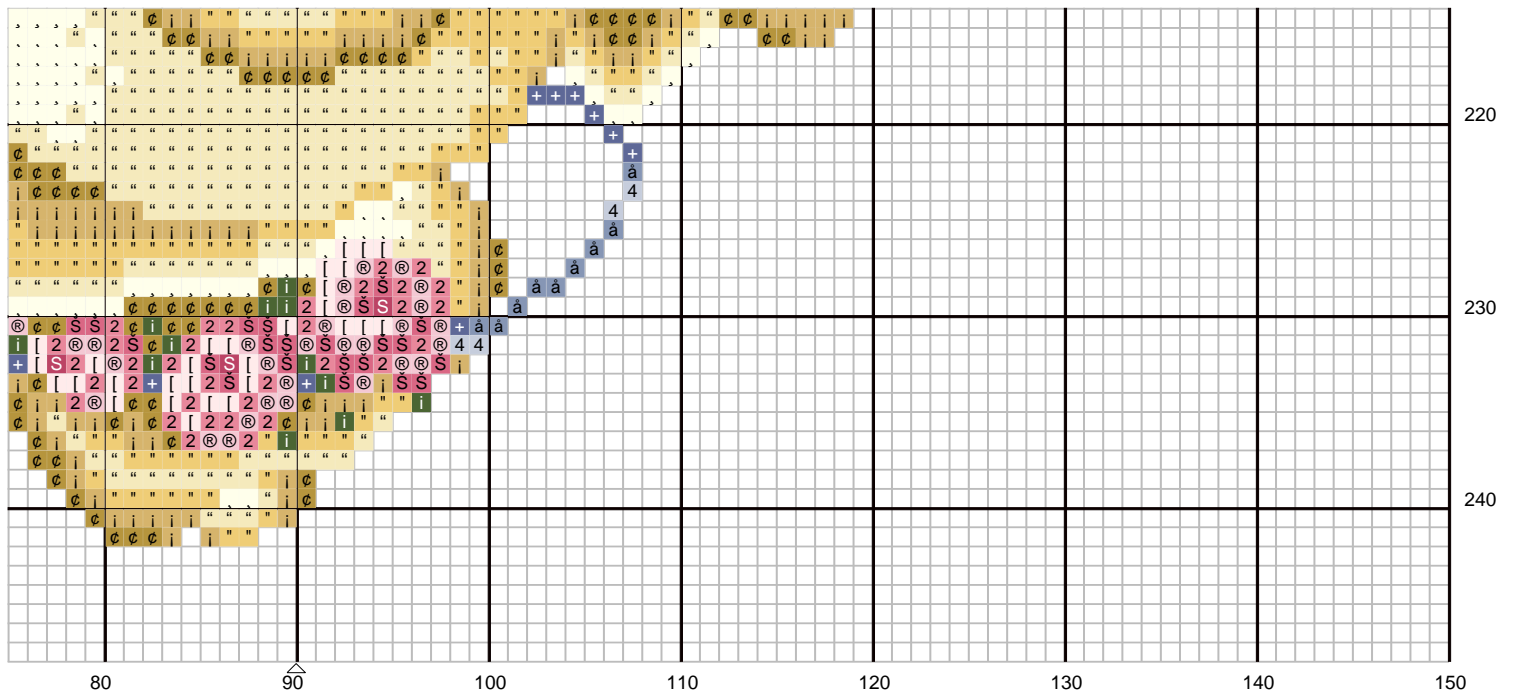
100

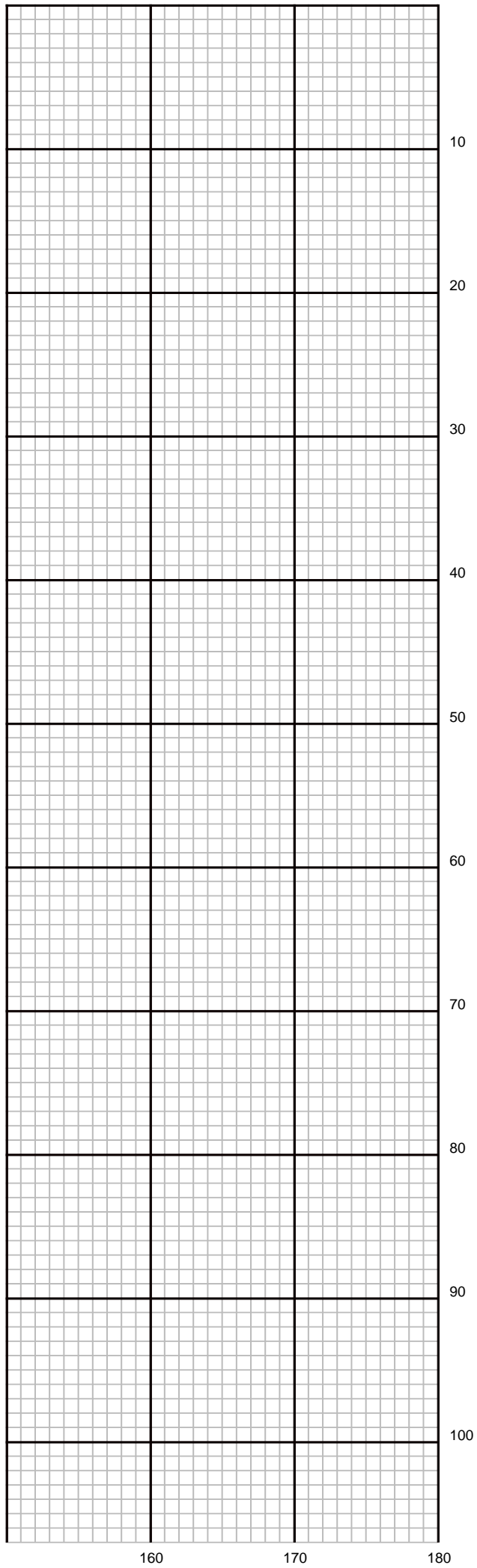




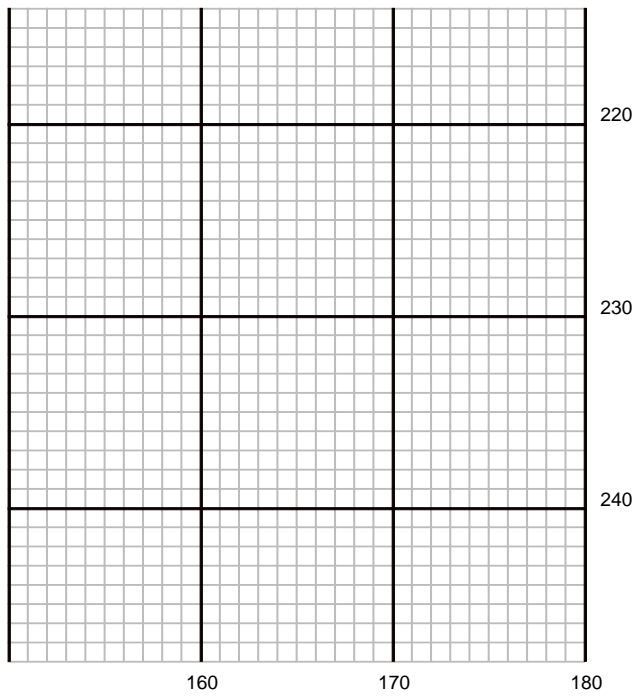








A large grid-based crossword puzzle page showing a section from row 110 to 210 and column 160 to 180. The puzzle is partially filled with letters and symbols. A small blue '+' pattern is visible in the upper left. A larger tan pattern contains various letters and symbols, including 'i', 'c', 's', '2', 'a', and '4'. The grid is overlaid with a large grid showing row and column indices.



LL 62 Dance of the Roses

Author:	Marilyn Leavitt-Imblum
Grid Size:	180W x 248H
Cloth Count:	14
Fabric:	28 count Cashel Linen Summer Khaki
Design Area:	12,86" W x 17,71" H (173 x 240 stitches)

Legend: DMC Stranded Cotton (strands)

Ⓜ	151	dusty rose - vy lt (2)	746	off white (2)	☉	3828	hazel nut brown (2)
4	159	gray blue - lt (2)	801	coffee brown - dk (2)	β	3829	old gold - vy dk (2)
å	160	md gray blue (2)	819	baby pink - lt (2)	⌋	301	mahogany - md (2)
+	161	gray blue (2)	3350	dusty rose - ul dk (2)	TM	3064	desert sand (2)
i	422	hazel nut brown - lt (2)	3362	pine green - dk (2)	à	758	terra cotta - vy lt (2)
£	434	brown - lt (2)	3363	pine green - md (2)	}	754	peach - lt (2)
"	677	old gold - vy lt (2)	3364	pine green (2)	"	3779	terra cotta - ul vy (2)
"	676	old gold - lt (2)	3731	dusty rose - vy dk (2)	j	948	peach - vy lt (2)
#	729	old gold - md (2)	3733	dusty rose (2)			

Backstitches: DMC Stranded Cotton (strands)

—	151	dusty rose - vy lt (2)	—	3362	pine green - dk (2)	—	3829	old gold - vy dk (2)	—	301	mahogany - md (2)
—	801	coffee brown - dk (2)									

Instructions:

L&L 62 Dance of the Roses

Stitched 2 over 2 on 28 count Cashel Linen Summer Khaki from Zweigart or Country French linen Spring Meadow (#92-240) from Wichelt.

Stitch count 173x 240. Design area 12 1/2" x 17 1/4".

Frame n° 683 G from Larson-Juhl.

Splendor Designer Collection from Rainbow Gallery

S974 - DMC 301

S1085 - DMC 3064

S1131 - DMC 758

S1098 - DMC 754

S1084 - DMC 3779

S1083 - DMC 948

Stitching Instructions

Use 2 strands over 2 fabric threads

Backstitch Instructions

Use 2 strands unless noted

Flesh in S974 (301)

Eyelashes and eyebrow in 801 (3 strands)

Curl in 3829

Stems in 3362