

10

20

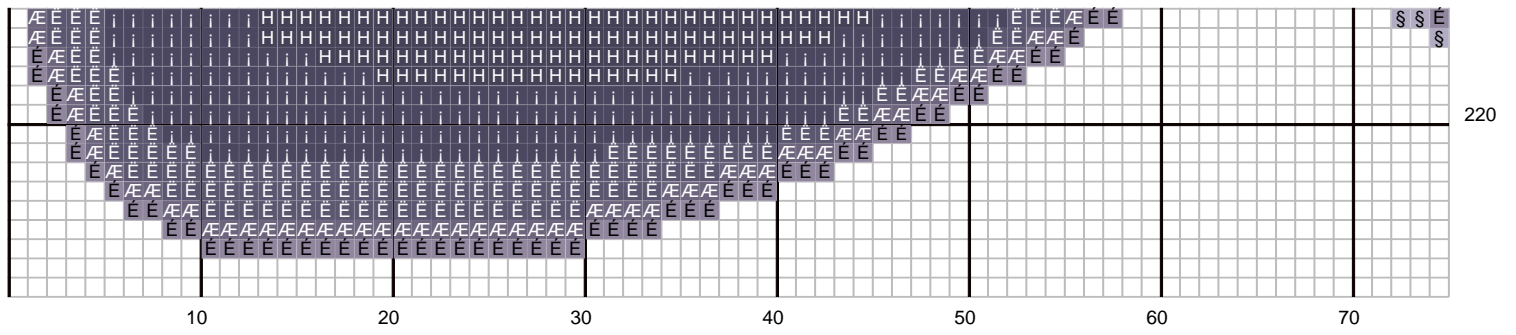
30

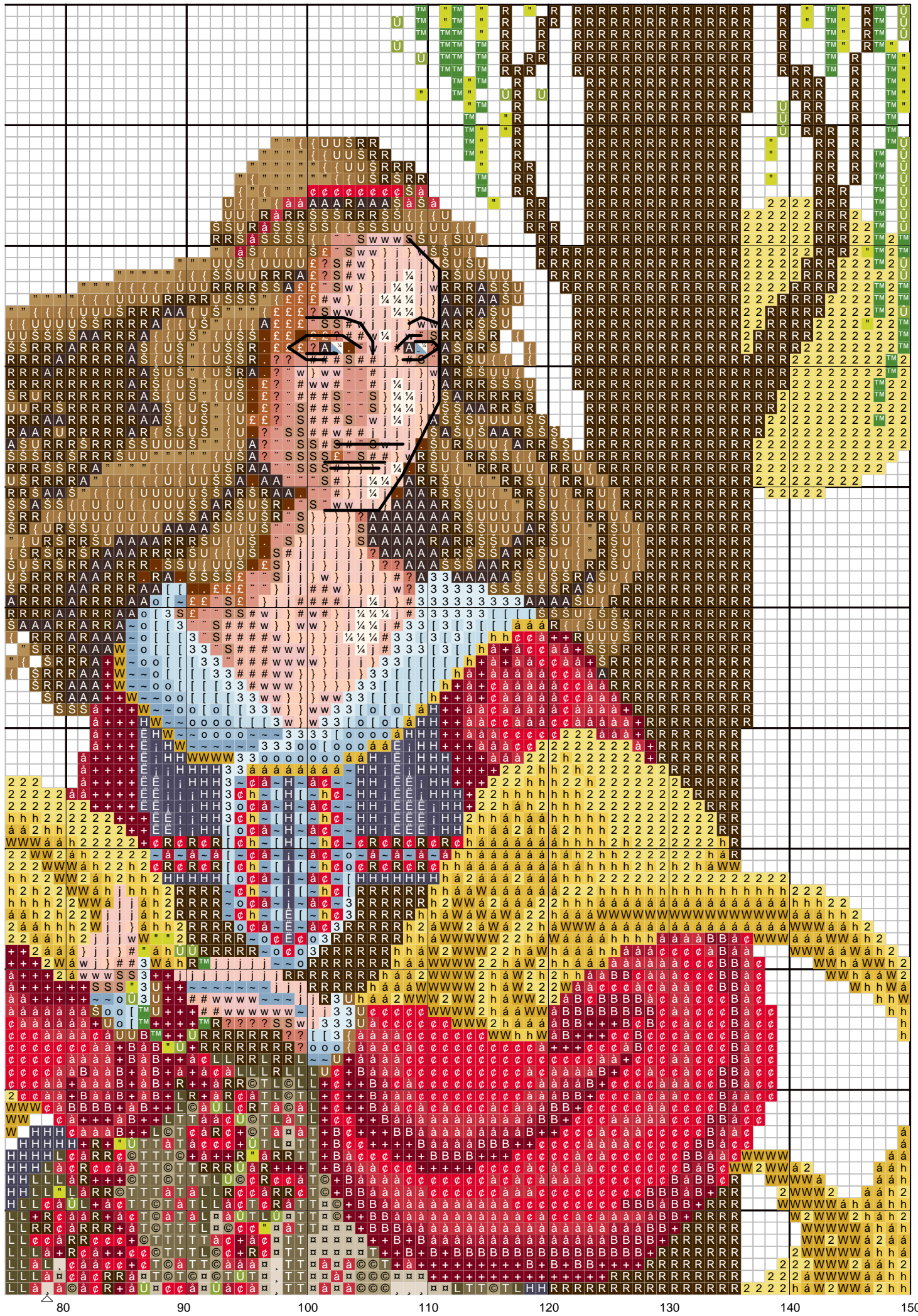
40

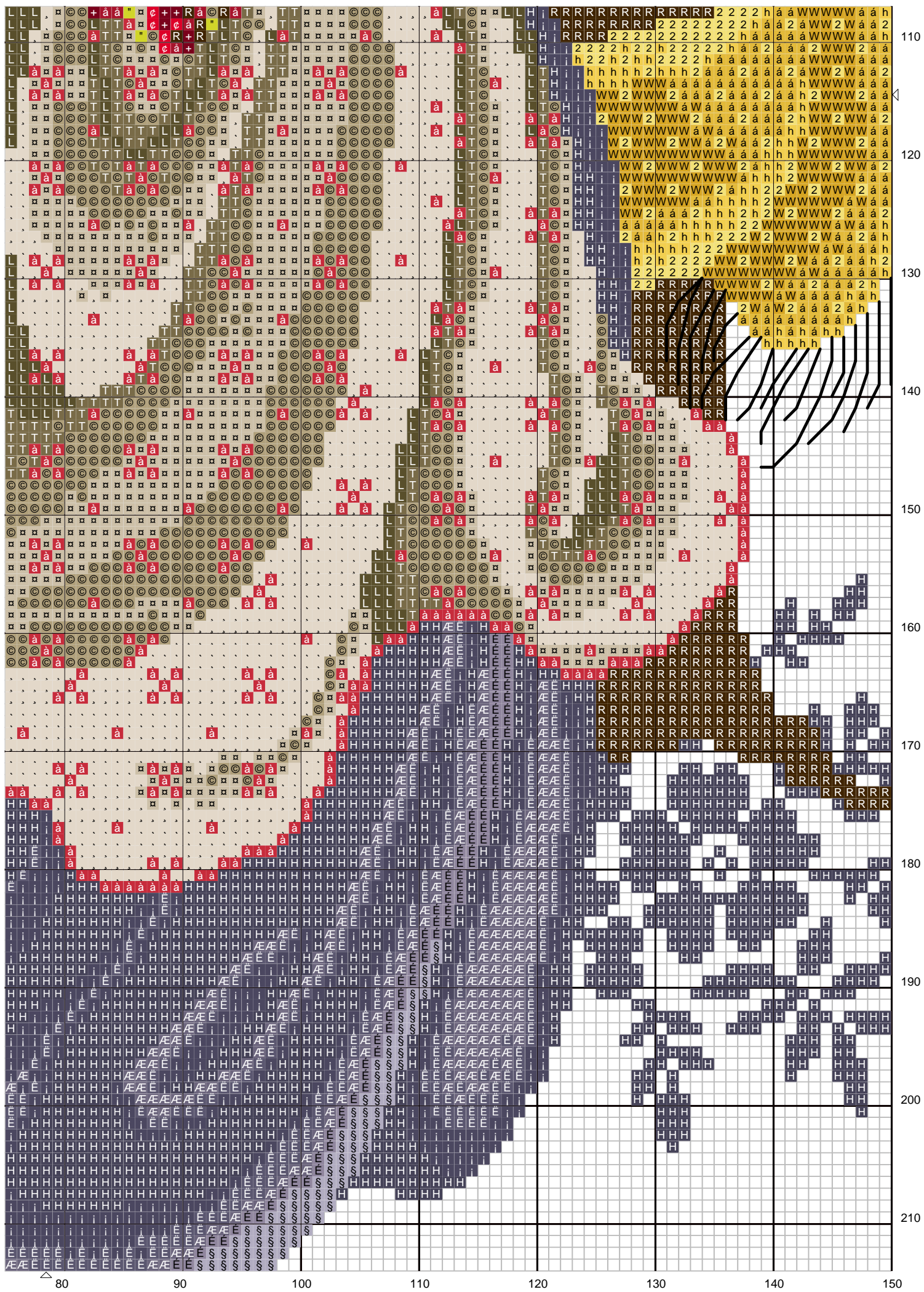
50

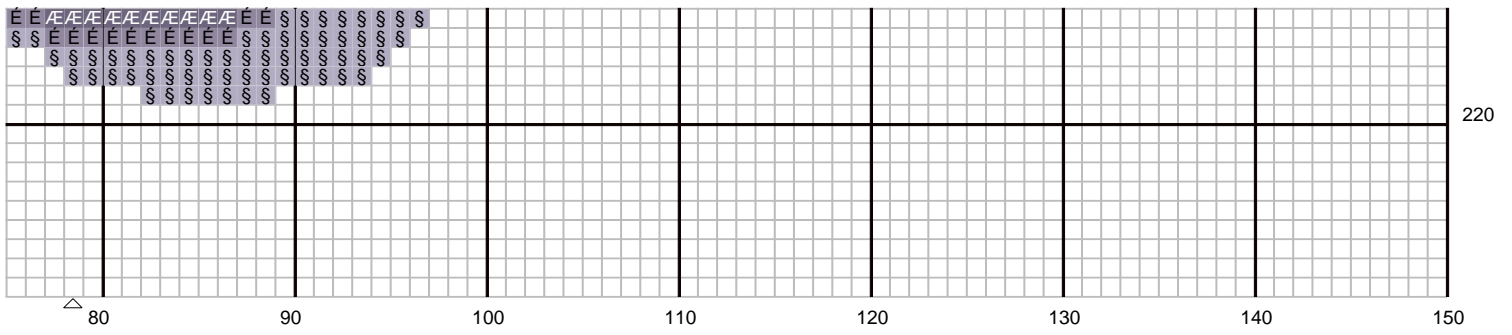
60

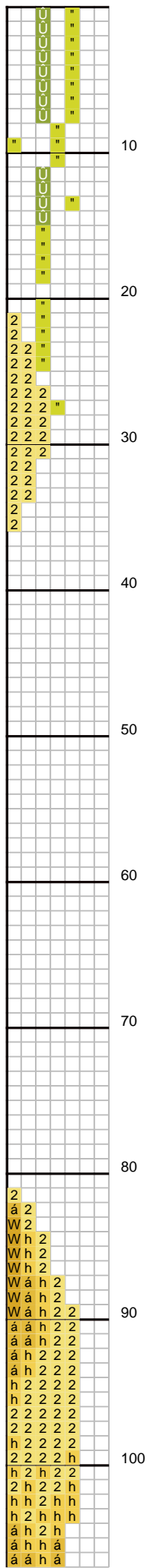
70

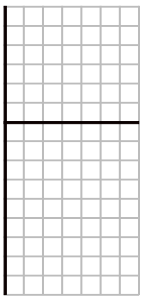












220

LL 61 Evangeline

Author:	Marylin Leavitt-Imblum
Grid Size:	157W x 229H
Cloth Count:	14
Fabric:	
Design Area:	11,21" W x 16,36" H (155 x 227 stitches)

Legend: DMC Stranded Cotton (strands)

R 938 coffee brown - ul dk (2)	U 581 moss green (2)	L 3781 mocha brown - dk (2)
+ 814 garnet - dk (2)	☿ 666 christmas red - br (2)	▣ 3782 mocha brown - lt (2)
• 3033 mocha brown - vy lt (2)	3 775 baby blue - vy lt (2)	T 3790 beige gray - ul dk (2)
• 166 md lt moss green (2)	B 815 garnet - md (2)	á 3820 straw - dk (2)
W 3852 straw - vy dk (2)	} 945 tawny - md (2)	h 3821 straw (2)
• 300 mahogany - vy dk (2)	© 3032 mocha brown - md (2)	2 3822 straw - lt (2)
à 321 christmas red (2)	o 3325 baby blue - lt (2)	I 3841 pale baby blue (2)
? 356 terra cotta - md (2)	TM 3346 hunter green (2)	£ 301 mahogany - md (2)
S 433 brown - md (2)	A 3371 black brown (2)	w 3779 terra cotta - ul vy (2)
U 434 brown - lt (2)	~ 3755 baby blue (2)	S 3064 desert sand (2)
} 435 brown - vy lt (2)	¼ 3770 tawny - vy lt (2)	j 754 peach - lt (2)
" 436 tan (2)	# 3771 ul vy lt terra cotta (2)	B 798 delft blue - dk (2)
à 498 christmas red - dk (2)	" 3778 terra cotta - lt (2)	

Legend: Other Manufacturers (strands)

S NLP 2001 needlepaints (2)	E NLP 2003 needlepaints (2)	i NLP 2005 needlepaints (2)	H NLP 2006 needlepaints (2)
E NLP 2002 needlepaints (2)	E NLP 2004 needlepaints (2)		

Backstitches: DMC Stranded Cotton (strands)

— 356 terra cotta - md (1)	— 3371 black brown (1)	— 3822 straw - lt (1)
-----------------------------------	-------------------------------	------------------------------

Instructions:

Evangeline

Stitched on 32 count Tobacco linen (2 over 2 except for optional 1 over 1 face)

Stitch count is 155 x 227. Design area is 9 3/4" x 14 1/4".

Fabric from Zweigart, Frame Number 603601 from Larson-Juhl

Splendor Designer Collection from Rainbow Gallery

S974 - DMC 301
S1084 - DMC 3779
S1085 - DMC 3064
S1098 - DMC 754

Needlepaints (Alternate color scheme in DMC)

2001 - 157
2002 - 794
2003 - 793
2004 - 3807
2005 - 158
2006 - 791

Backstitch Instructions

Fringe 3822

For 2 over 2 face, use shades of beige and darker brown as makeup