

10

20

30

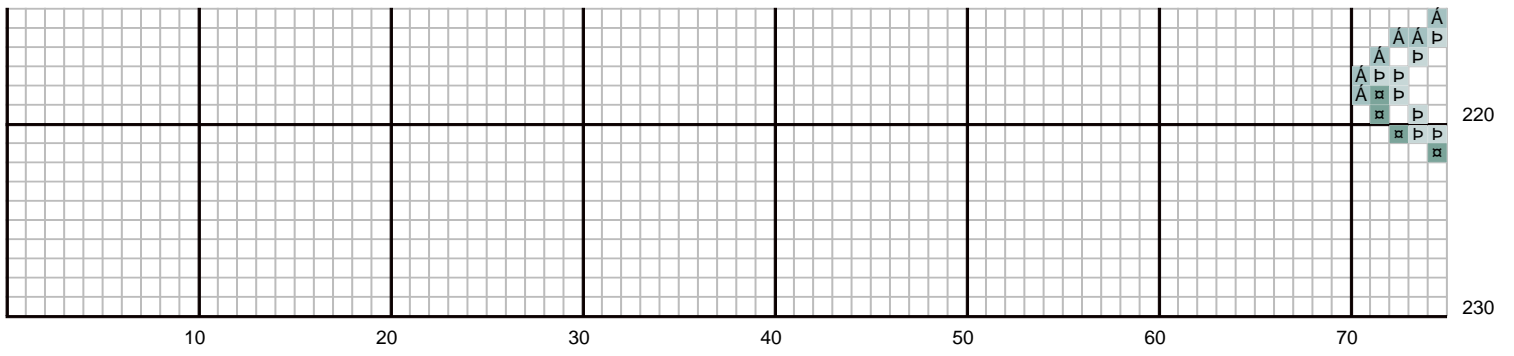
40

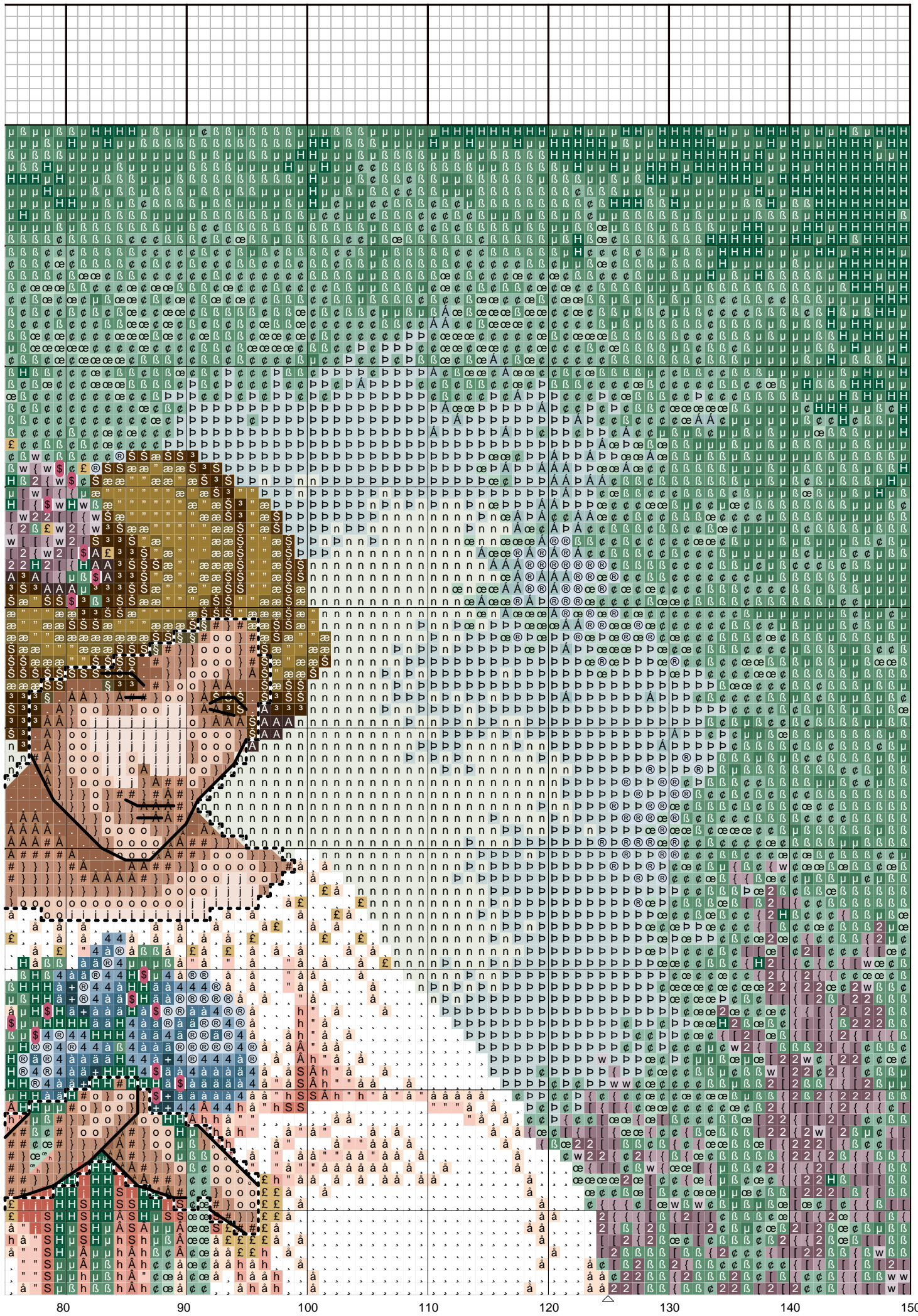
50

60

70

A large grid-based crossword puzzle layout. The grid is filled with letters and numbers. The numbers 10, 20, 30, 40, 50, 60, and 70 are printed along the bottom edge. On the right side, the numbers 110, 120, 130, 140, 150, 160, 170, 180, 190, 200, and 210 are printed, indicating row positions. The letters are arranged in a pattern that forms words across the grid.





10

20

30

40

50

60

70

80

90

100

80

90

100

110

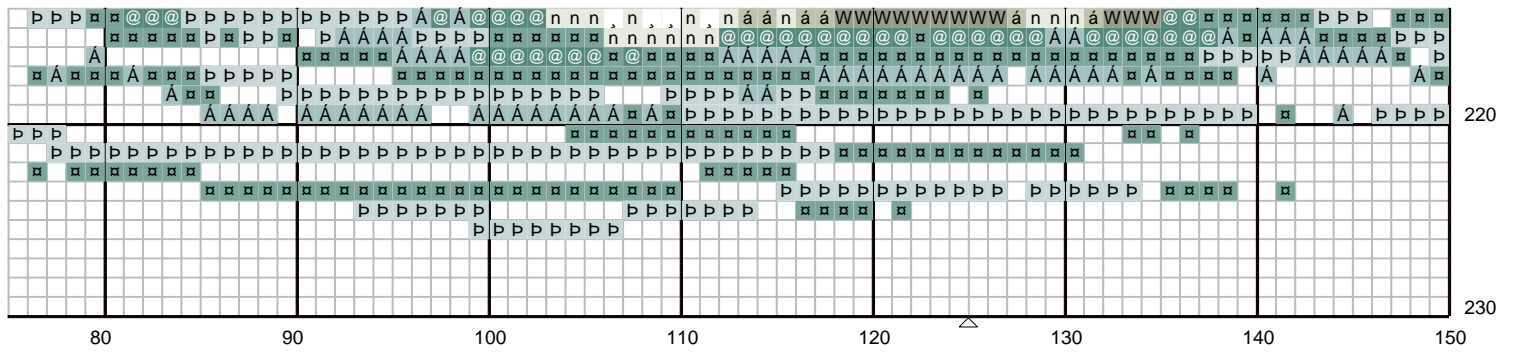
120

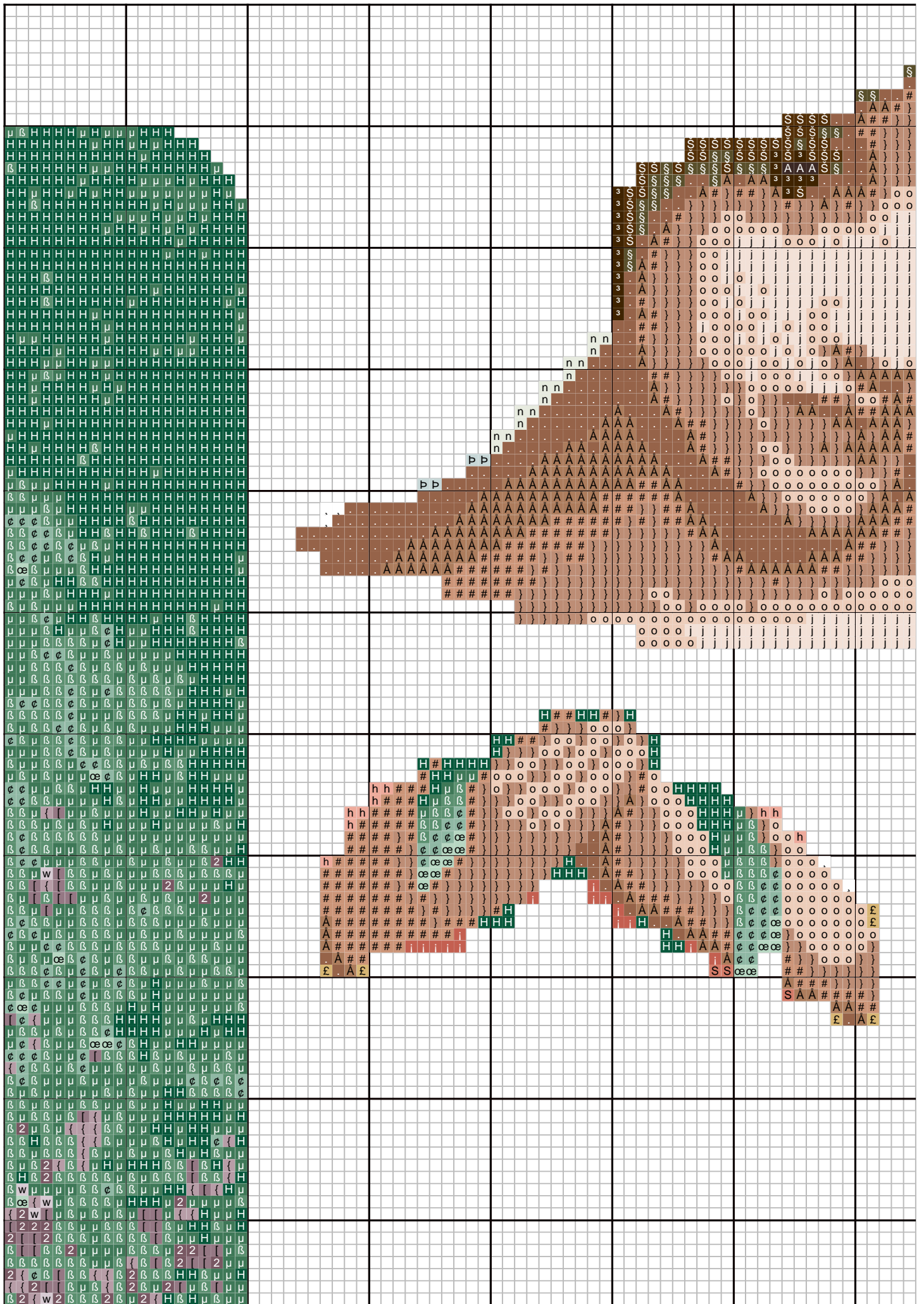
130

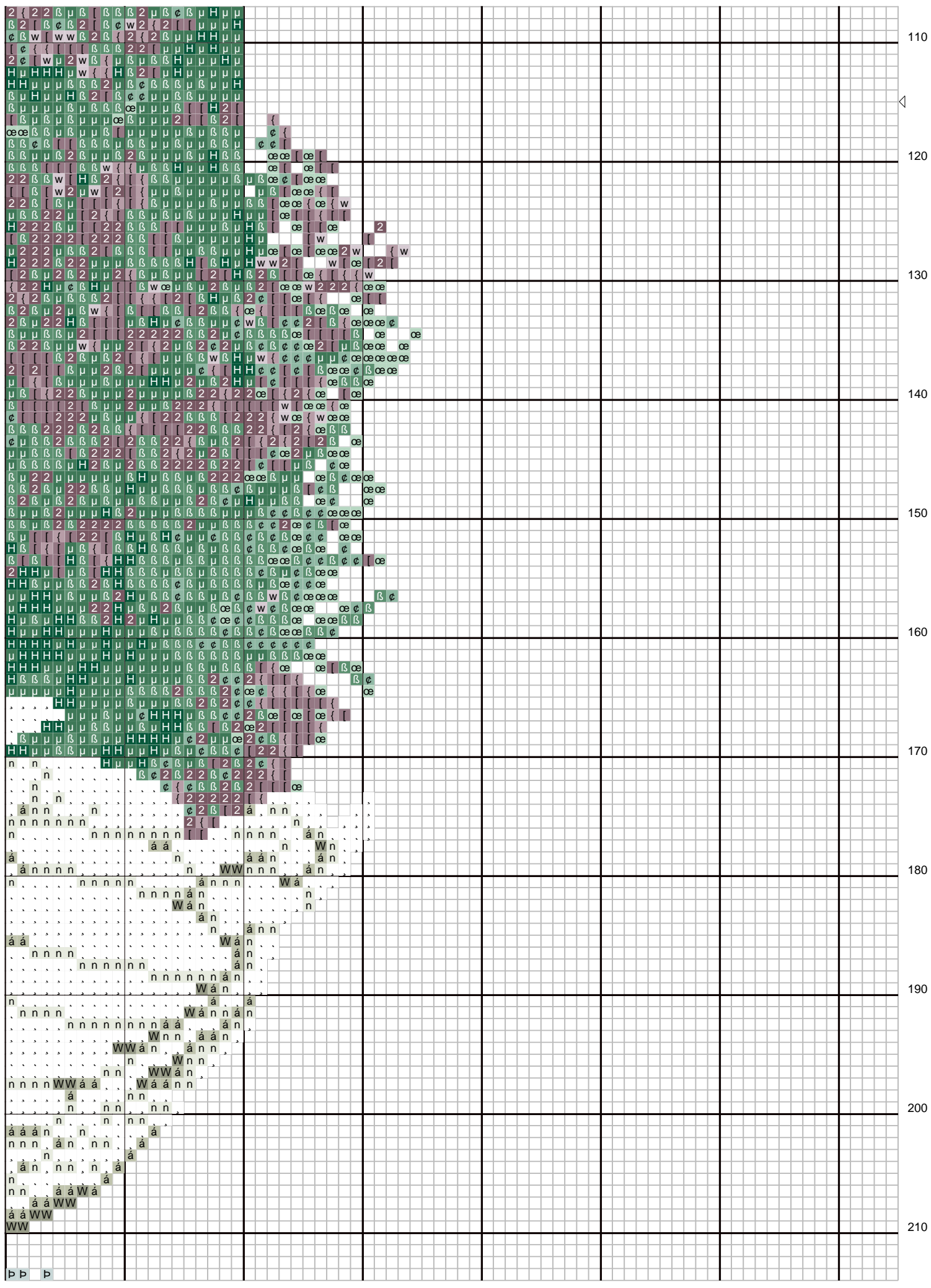
140

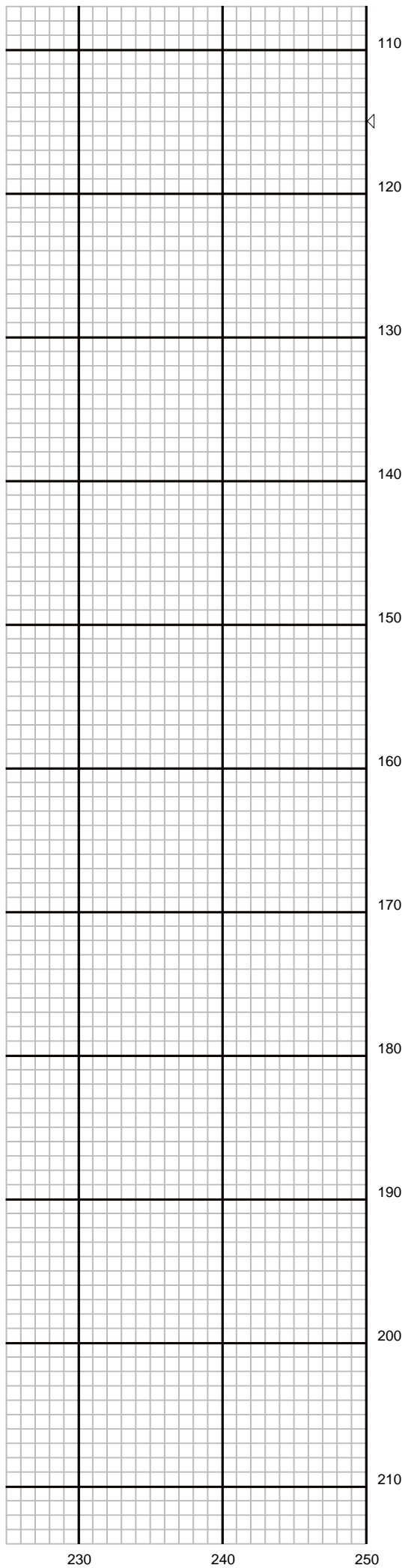
150

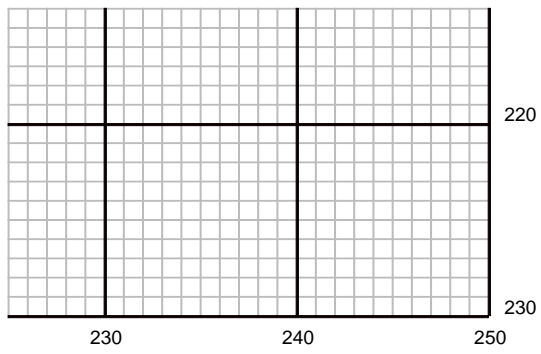
80	81	82	83	84	85	86	87	88	89	90	91	92	93	94	95	96	97	98	99	100	101	102	103	104	105	106	107	108	109	110	111	112	113	114	115	116	117	118	119	120	121	122	123	124	125	126	127	128	129	130	131	132	133	134	135	136	137	138	139	140	141	142	143	144	145	146	147	148	149	150																																																																						
110	111	112	113	114	115	116	117	118	119	120	121	122	123	124	125	126	127	128	129	130	131	132	133	134	135	136	137	138	139	140	141	142	143	144	145	146	147	148	149	150	151	152	153	154	155	156	157	158	159	160	161	162	163	164	165	166	167	168	169	170	171	172	173	174	175	176	177	178	179	180	181	182	183	184	185	186	187	188	189	190	191	192	193	194	195	196	197	198	199	200	201	202	203	204	205	206	207	208	209	210	211	212	213	214	215	216	217	218	219	220	221	222	223	224	225	226	227	228	229	230	231	232	233	234	235	236	237	238	239	240	241	242	243	244	245	246	247	248	249	250











Lady Claire LL #45

Author:	Marilyn Leavitt-Imblum
Grid Size:	250W x 230H
Cloth Count:	14
Fabric:	recharted by Lavigne
Design Area:	17,86" W x 16,43" H (237 x 223 stitches)

Legend: DMC Stranded Cotton (strands)

S	898	coffee brown - vy dk (1)	æ	869	hazel nut brown - vy dk (2)	2	3740	antique violet - dk (2)
#	3064	desert sand (2)	π	926	gray green - md (2)	w	3743	antique violet - vy lt (2)
W	647	beaver gray - md (2)	À	927	gray green - lt (2)	+	3750	antique blue - vy dk (2)
S	356	terra cotta - md (2)	Þ	928	gray green - vy lt (2)	@	3753	antique blue - ul vy (2)
"	420	hazel nut brown - dk (2)	ä	930	antique blue - dk (2)	3768	gray green - dk (2)	
TM	422	hazel nut brown - lt (2)	à	931	antique blue - md (2)	Å	3772	desert sand - vy dk (2)
H	500	blue green - vy dk (2)	4	932	antique blue - lt (2)	}	3773	desert sand - md (2)
μ	501	blue green - dk (2)	3	938	coffee brown - ul dk (2)	5200	snow white (2)	
β	502	blue green (2)	å	948	peach - vy lt (2)	œ	3813	blue green - lt (2)
ç	503	blue green - md (2)	o	950	desert sand - lt (2)	Å	3778	terra cotta - lt (2)
.	632	desert sand - ul vy dk (2)	ı	3041	antique violet - md (2)	i	3830	terra cotta (2)
á	648	beaver gray - lt (2)	{	3042	antique violet - lt (2)	5	3828	hazel nut brown (2)
"	754	peach - lt (2)	n	3072	beaver gray - vy lt (2)	\$	3781	mocha brown - dk (2)
h	758	terra cotta - vy lt (2)	A	3371	black brown (2)	j	3774	desert sand - vy lt (2)

Legend: Other Manufacturers (strands)

£ KRE 221 Antique Gold (2)

Backstitches: DMC Stranded Cotton (strands)

—	420	hazel nut brown - dk (2)	—	938	coffee brown - ul dk (2)	5200	snow white (2)
—	632	desert sand - ul vy dk (2)	—	5200	snow white (2)	—	3781	mocha brown - dk (2)

Beads:

\$ Mill Hill Petite Beads 42024 Heather Mauve

Instructions:

Stitched on 32 count Platinum Linen (2 over 2) #3609/770/55. Stitch Count 178 x 216.
Design area 11 1/4" x 13 1/2". Fram 500 CS from Larson-Juhl. Fabric from Zweigart.

Stitching Instructions

Design is stitched using 2 strands of floss over 2 threads of linen.

"1 over 1" face & hands are stitched using 1 strand of floss over 1 thread of linen.

"2 over 2" face & hands are stitched using 2 strands of floss over 2 thread of linen.

Backstitch

Upper lines of swan's beak in 938 (2 str.)

Bottom line of swan's beak in 420 (2 str)

Swan eye in B5200 (2 str)

Backstitch for "2 over 2" face

Face, chin, and hands in 632 (2 str.)

Eyes in 938 (2 str.)

Mouth in 3781 (2 str)

Note : the white backstitch shows the location of the 1 over 1 section