

10

20

30

40

50

60

70

80

90

100

80

90

100

110

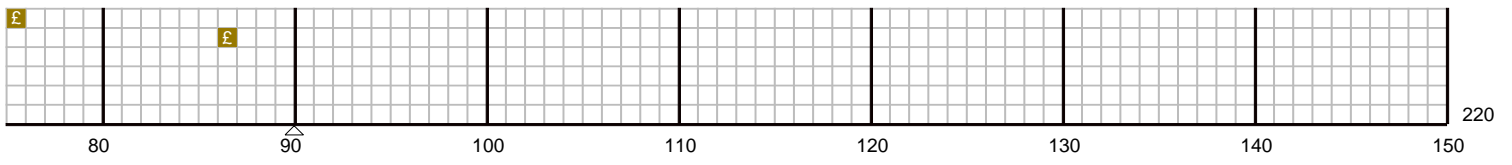
120

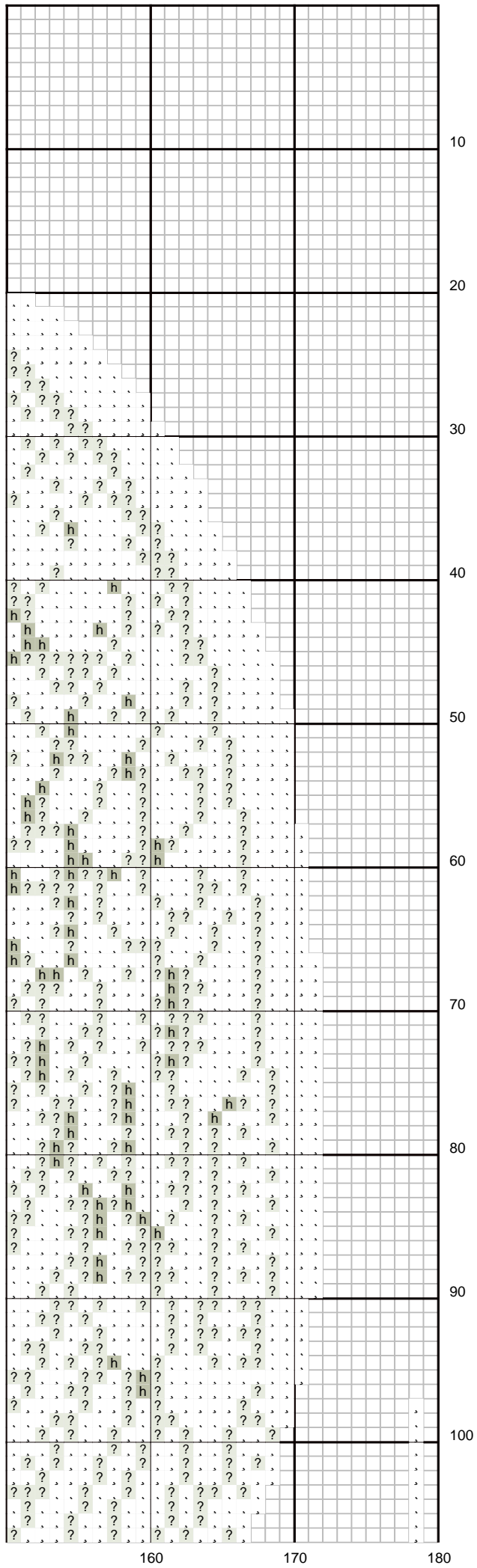
130

140

150



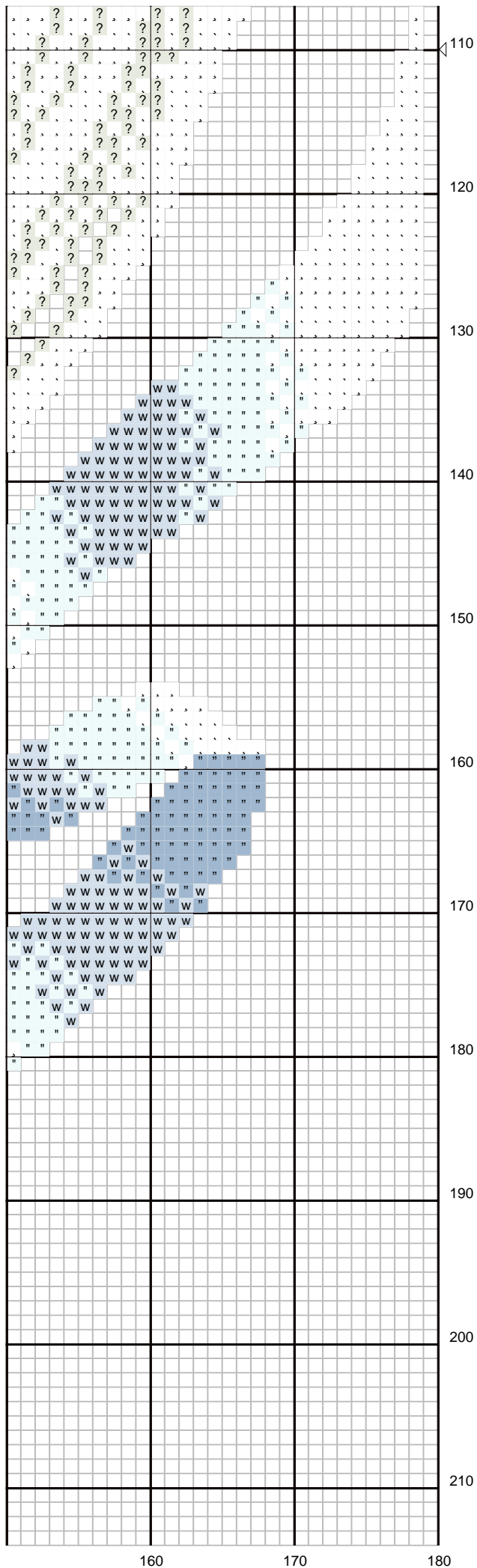




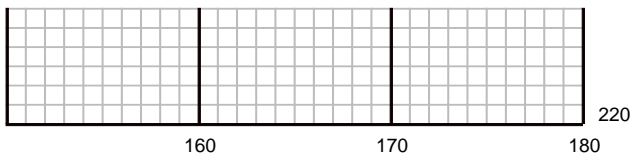
160

170

180







# Earth Angel - LL16

Author:	Marilyn Leavitt-Imblum
Grid Size:	180W x 220H
Cloth Count:	14
Fabric:	
Design Area:	12,86" W x 15,71" H ( 168 x 203 stitches )

## Legend: DMC Stranded Cotton (strands)

H	939 navy blue - vy dk (2)	T	502 blue green (2)	è	931 antique blue - md (2)
V	938 coffee brown - ul dk (2)	à	503 blue green - md (2)	Ø	932 antique blue - lt (2)
R	211 lavender - lt (2)	®	504 blue green - lt (2)	2	934 black avocado green (2)
+	500 blue green - vy dk (2)	ä	550 violet - vy dk (2)	o	3051 green gray - dk (2)
.	White white (2)	h	648 beaver gray - lt (2)	#	3052 green gray - md (2)
i	948 peach - vy lt (2)	à	758 terra cotta - vy lt (2)	?	3072 beaver gray - vy lt (2)
}	754 peach - lt (2)	ß	801 coffee brown - dk (2)	µ	3371 black brown (2)
W	501 blue green - dk (2)	i	823 navy blue - dk (2)	i	3750 antique blue - vy dk (2)
í	208 lavender - vy dk (2)	~	898 coffee brown - vy dk (2)	"	3752 antique blue - vy lt (2)
4	209 lavender - dk (2)	À	924 gray green - vy dk (2)	w	3753 antique blue - ul vy (2)
æ	210 lavender - md (2)	P	926 gray green - md (2)	"	3756 baby blue - ul vy lt (2)
À	327 violet - vy dk (2)	.	927 gray green - lt (2)	2	3768 gray green - dk (2)
↓	433 brown - md (2)	S	930 antique blue - dk (2)	£	5282 metallic gold (2)
E	434 brown - lt (2)				

## Backstitches: DMC Stranded Cotton (strands)

—	356 terra cotta - md (1)	—	3371 black brown (1)
---	--------------------------	---	----------------------

## Instructions:

### Earth Angel - L&L16

Stitched on 32 count (2 over 2) or 28 count (2 over 2) Twilight Blue Linen from Wichelt Imports. Design area is 10 1/2" x 12 3/4" on 32 count, or 12" x x 14 1/2" on 28 count. Stitch count 168 x 203.

### Special Thread

DMC 284Z [DMC 5282]

### Backstitch Instructions

Face in 356 (1 str.)

Eye and eyebrow in 3371 (2 str.)

~Lavigne~