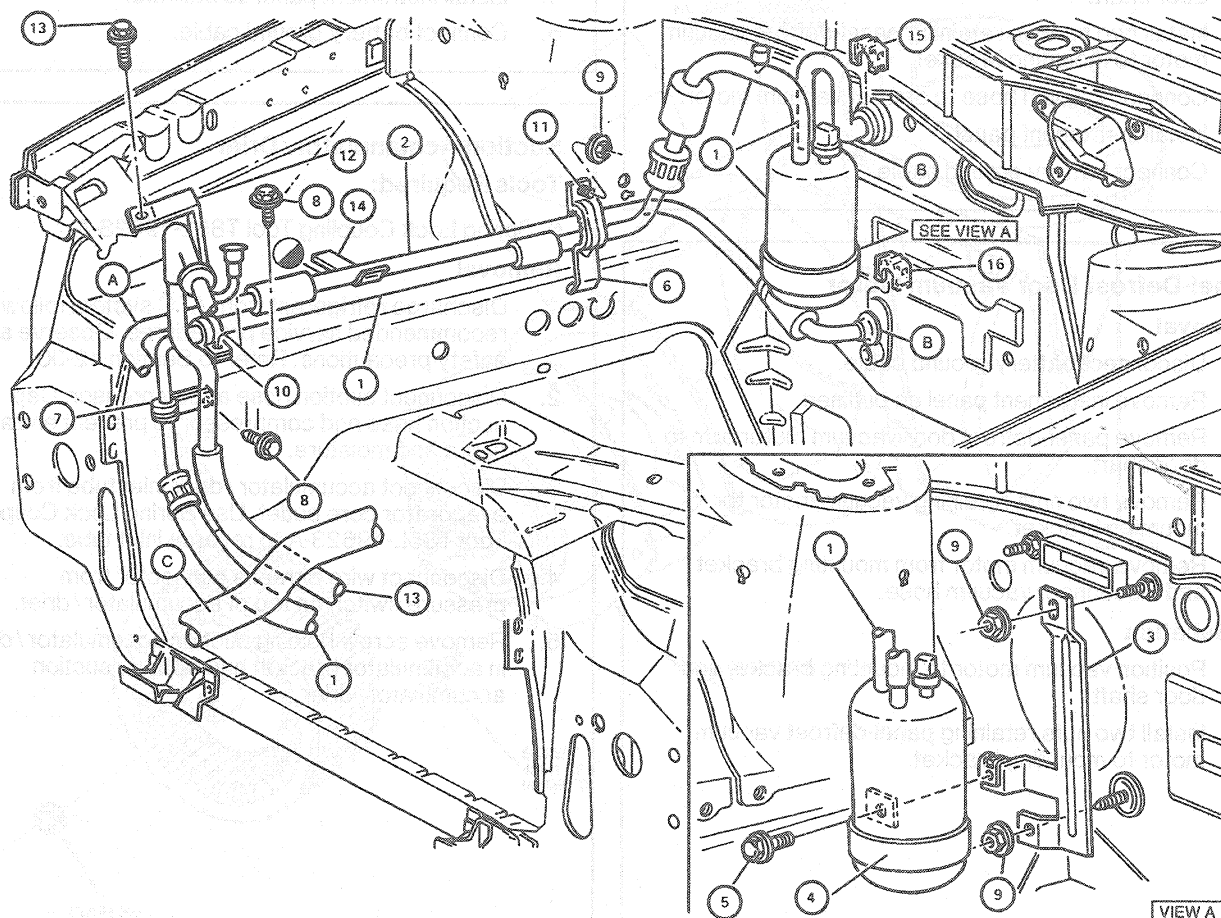


REMOVAL AND INSTALLATION (Continued)

Suction Accumulator Drier



POSITION LOCATION IN HOLE PROVIDED
AT LOCATION INDICATED BY

- | | | |
|---|--|------------------------------------|
| 1 -19C913- ACCUMULATOR & HOSE ASY. | 8 N610957-S2 SCREW (2-REQD.) | 12 -19D720- BRACKET A/C INLET TUBE |
| 2 -19N651- TUBE ASY. COND. TO EVAP. | 9 N621906-S2 NUT & WASHER ASY. (3-REQD.) | 13 N610956-S2 SCREW |
| 3 -19D606- BRACKET ASY.-A/C ACCUMULATOR | 10 N804200-S100 CLIP | 14 N805732-S CLIP |
| 4 BRACKET-P.I.A. OF 19D606 ASY. | 11 N800358-S2 SCREW & RETAINER ASY. | 15 -19E746- SLC CLIP |
| 5 SCREW-P.I.A. OF 19D606 ASY. | | 16 -19E746- SLC CLIP |
| 6 -19C789- BRACKET ASY.-A/C HOSE | | A TO A/C CONDENSER |
| 7 N804069-S100 CLIP | | B TO A/C EVAPORATOR |
| | | C LOWER RADIATOR HOSE (REF.) |

CCL 3787-A

Installation

1. Position suction accumulator / drier to vehicle and route suction hose to compressor.

2. Using new O-rings lubricated with clean refrigerant oil, connect accumulator / drier inlet tube to evaporator core outlet.

CAUTION: Make sure correct type O-rings are installed on A/C fittings.