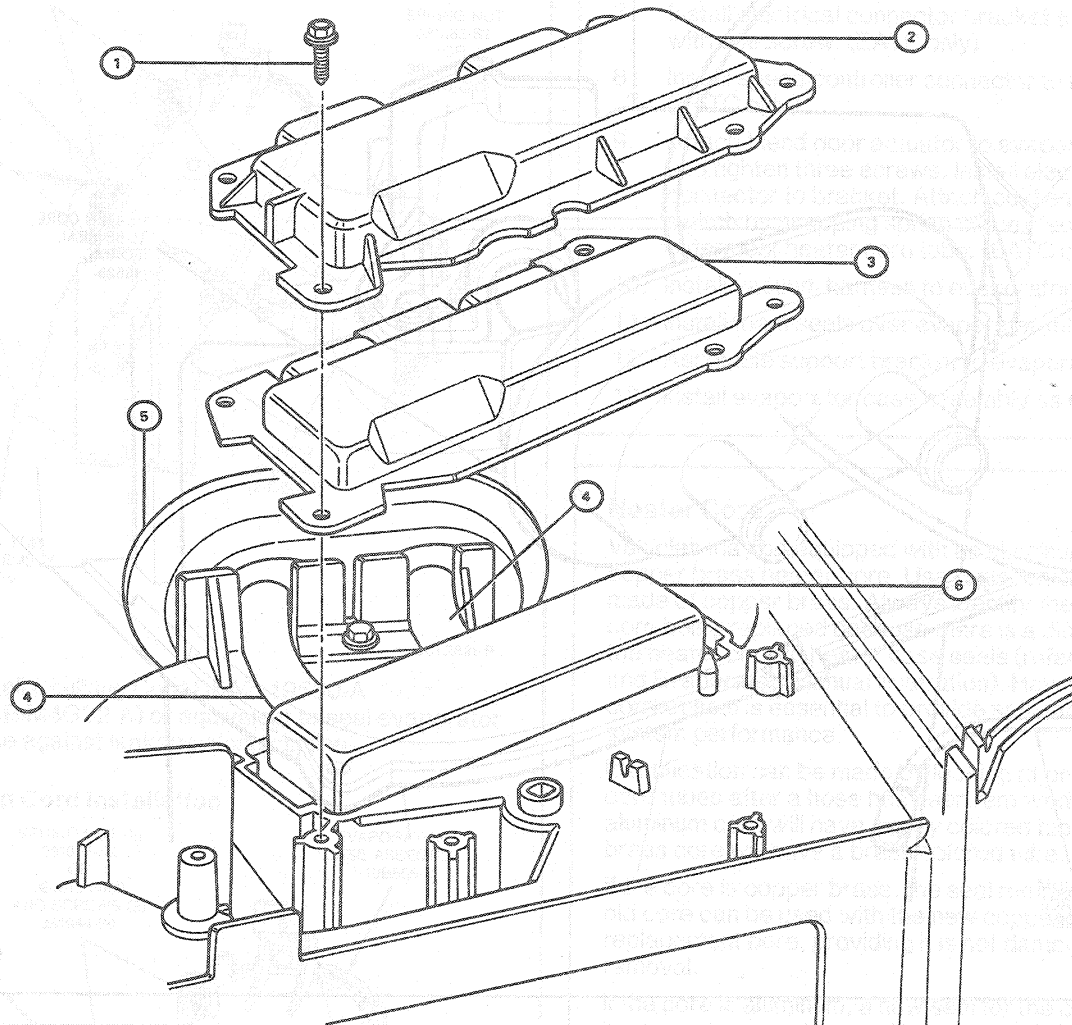


## REMOVAL AND INSTALLATION (Continued)

## Heater Core Access Cover Removal



## ITEM DESCRIPTION

1. SCREW - 42141 (4 REQ'D)
2. HEATER CORE ACCESS COVER - 18N276
3. HEATER CORE SEAL - 18N267

## ITEM DESCRIPTION

4. HEATER CORE TUBES
5. HEATER CORE TUBE SEAL - 18529
6. HEATER CORE - 18476

CCL 2624-B

7. Lift heater core and seals from evaporator case.

**Installation**

1. Transfer the seal to new heater core.
2. Install heater core and secure into evaporator case.
3. Position heater core access cover on evaporator case and install four retaining screws.

4. Position blend door actuator to blend door shaft. Install three screws retaining blend door actuator to evaporator case. (EATC only)
5. Install seal on heater core tubes.
6. Install vacuum source line through heater core tube seal.
7. Install evaporator case assembly into vehicle as outlined.
8. Install instrument panel as outlined.