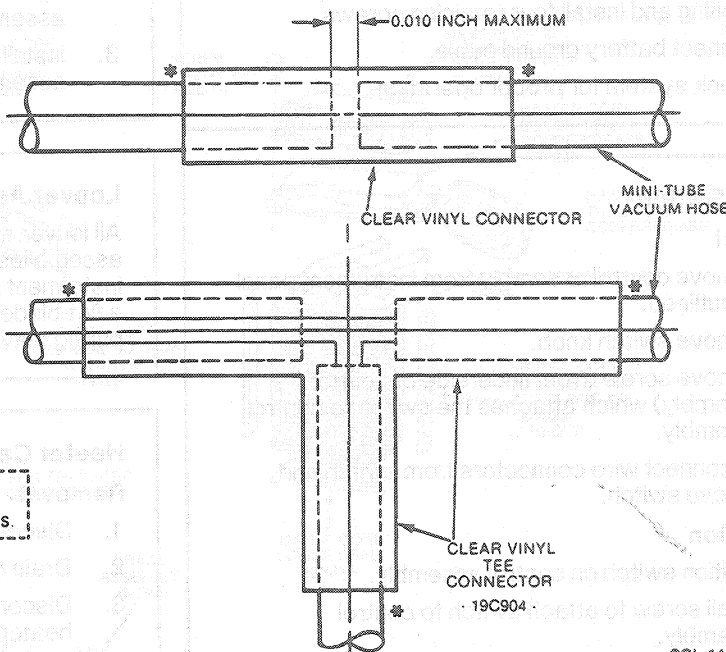


DESCRIPTION AND OPERATION (Continued)

Mini-Tube Vacuum Hose Service



***DIP THE MINI-TUBE HOSE ENDS IN TETRA HYDRO FURAN (THF) OR METHYL ETHYL KETONE (MEK) TO ACT AS SOLVENT AND SEAL THE REPAIR JOINTS.**

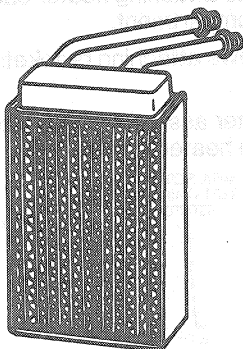
ALL PASSAGES MUST BE CLEAN AND FREE OF OBSTRUCTION

CCL 1435-C

Heater Core

The heater core consists of a number of fins, and tubes in a geometry to extract available heat from the engine coolant and transfer that heat to the air that passes through the core.

Heater Core



CCL 3630-A

Register Assemblies

The register assemblies have retaining pins on each end of the louver assembly that lock into pivot holes in the register housing. The housings are an integral part of the instrument panel applique assembly. The applique panel has four flexible tabs (two on top and two on the bottom) that lock the housing into the instrument panel. The louver assembly swivels, directing outlet air up or down while the louvers allow side-to-side air distribution.

A knob located on the LH front of the register assembly controls an air outlet shutoff door installed in the register housing assembly.

REMOVAL AND INSTALLATION

Instrument Panel

Refer to Section 01-12 for instrument panel removal and installation procedures.

Control Assembly

Removal

1. Disconnect battery ground cable.
2. Remove four screws attaching control assembly to instrument panel.
3. Pull control assembly from instrument panel opening and disconnect wire connectors from control assembly.
4. Disconnect vacuum harness and wire connectors from control assembly. Discard pushnuts used to retain vacuum harness.

Installation

1. Connect wire connectors and vacuum harness to control assembly using new pushnuts.
- CAUTION: Push on vacuum harness retaining nut. Do not attempt to screw onto post.**