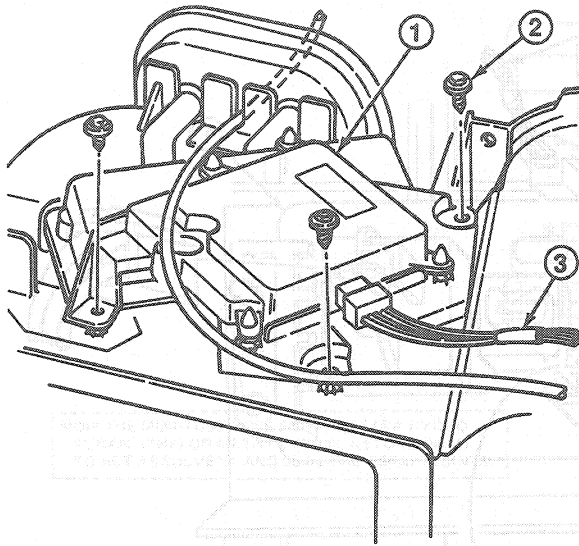


DESCRIPTION AND OPERATION (Continued)

Electric Blend Door Actuator



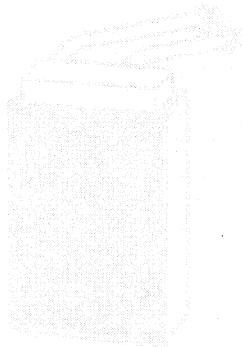
- 1. BLEND DOOR ACTUATOR
- 2. ACTUATOR TO EVAPORATOR CASE MOUNTING SCREWS
- 3. JUMPER HARNESS FROM 14401 WIRING

CCL 3732-A

Heater Core

The heater core consists of a number of fine tubes which provide a large area to extract available heat from the engine coolant and transfer that heat to the air that passes through the core.

Heater Core



Register Assemblies

The register assembly is a retaining pin or screw at the outer edge of the register cover that lock into pivot holes in the register housing. The housing is an integral part of the heater control assembly. The opposite end of the register housing has tabs that fit into the register housing and the housing into the heater control panel. The cover assembly swivels, directing air up or down while the covers allow air to enter the register.

1. The vacuum selector valve directs source vacuum to various vacuum motors. One internal single-pole electrical switch is also controlled by the selector. The internal electrical switch controls the electrical supply to the blower switch (refer to Heater System Electrical Wiring Diagram).
2. The four-speed blower switch controls blower speed and is manually set to select the desired airflow.
3. The temperature control knob (temperature adjustment potentiometer) is connected to the temperature blend door by an electric actuator. Movement of the control knob from COOL to WARM causes a corresponding movement on the temperature blend door and determines the temperature that the system will maintain.

REMOVAL AND INSTALLATION

Removal

Refer to Section 11-1 for removal of the heater control assembly and installation of the heater control assembly. The heater control assembly is used to control the heater system. The heater control assembly is used to control the heater system. The heater control assembly is used to control the heater system.

1. Remove four screws attaching control assembly to instrument panel.
2. Pop control assembly from instrument panel, applying an upward force on control panel assembly.
3. Disconnect vacuum harness and its connectors from control assembly. Discard and reuse used to retain vacuum harness.

Installation

Connect with connectors and vacuum harness to control assembly using new pushpins.

CAUTION: Push on vacuum harness retaining nut. Do not attempt to screw into post.