

## REMOVAL AND INSTALLATION (Continued)

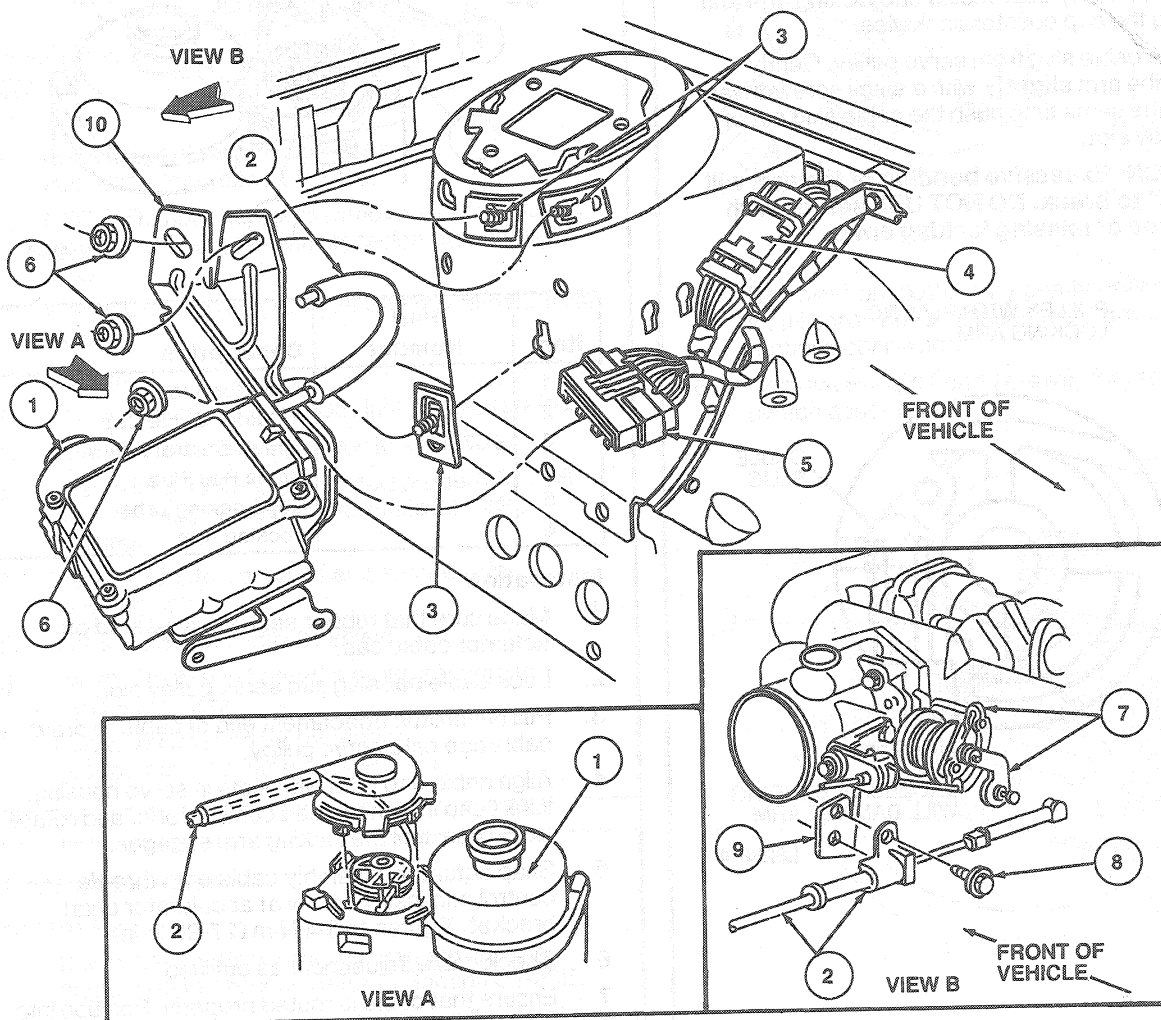
## Installation

1. Attach bracket to the speed control servo with three screws. Tighten to 8-11 N·m (6-8 lb-ft).
2. Ensure that rubber seal is fully seated on actuator cable tab.
3. Lock cable ball slug into servo pulley slot.
4. Pull on throttle attachment end of cable to draw cable cap on to servo pulley.
5. Insert cable cap locking tabs into servo slots. Rotate cap clockwise until locking arm engages locking tab on speed control servo.
6. Position actuator cable and servo assembly in vehicle. Tighten mounting nuts to 5-7 N·m (45-61 lb-in).
7. Attach 14290 harness connector to speed control servo.
8. Adjust actuator cable as outlined and install retaining clip.

NOTE: Incorrect wrapping of cable core wire around servo pulley may result in a high idle condition. Ensure that throttle lever is at idle position after cable installation and adjustment.

## Actuator Cable

## Speed Control Actuator and Servo



L8197-A