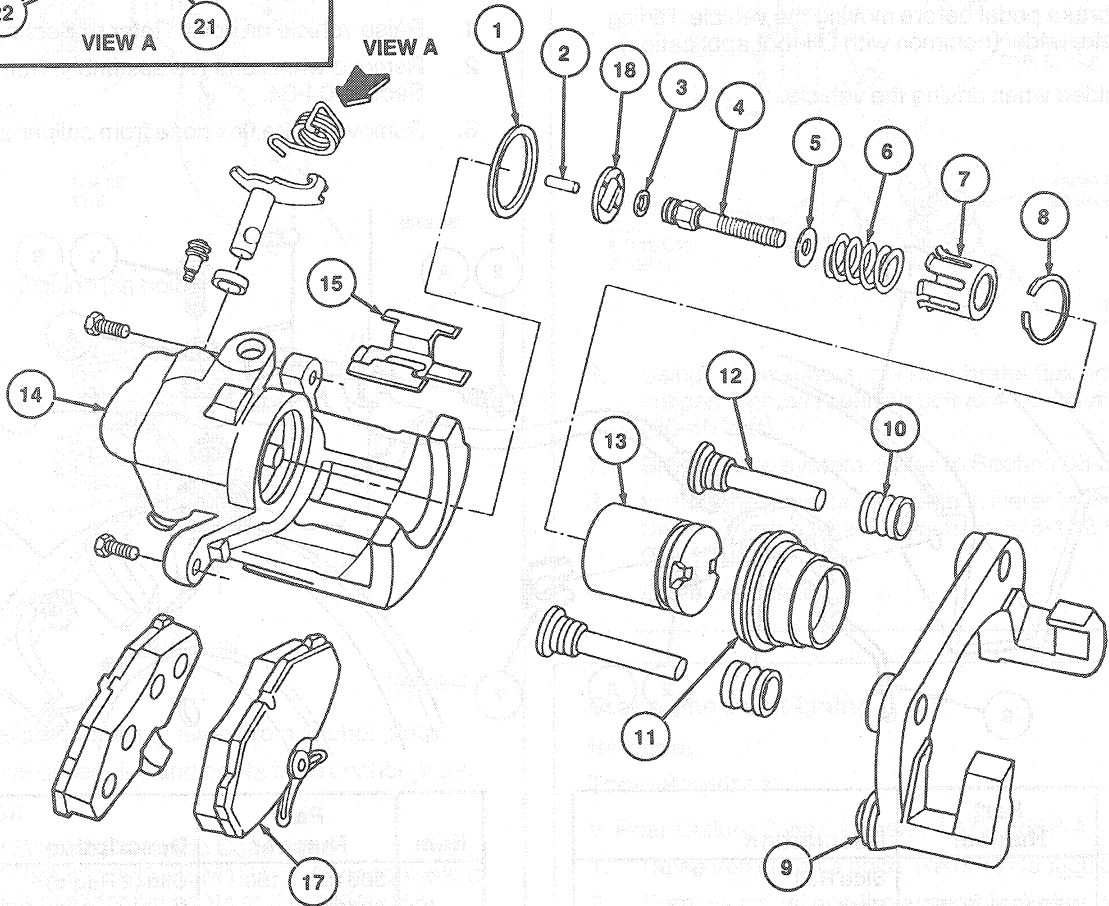
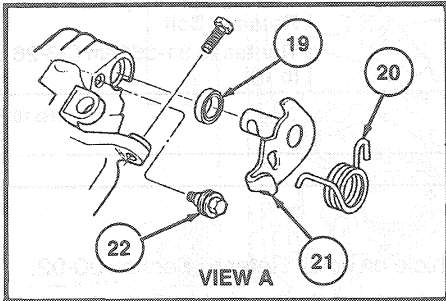


REMOVAL AND INSTALLATION

Caliper Assembly

During service, handle the caliper assembly and rotor in such a way as to avoid nicking, scratching or contaminating the brake linings or deforming the rotor.



H5166-E

Item	Part Number	Description
1	2N182	Piston Seal
2	2L627	Pin
3	2L594	O-Ring Seal
4	2N139	Push Rod
5	1N020	Flat Washer
6	2L396	Spring
7	2A787	Spring Cage
8	2A746	Snap Ring (Circlip)
9	2B511 (RH) 2B512 (LH)	Anchor Plate

(Continued)

Item	Part Number	Description
10	2A492	Slider Pin Boot Seal (2 Req'd)
11	2206	Piston Dust Boot
12	2B296	Slider Pin (2 Req'd)
13	2B588	Piston
14	2N122 (RH) 2N123 (LH)	Caliper Housing
15	—	Anti-Rattle Clip
16A	2N386	Slider Pin Pinch Bolt (2 Req'd)

(Continued)