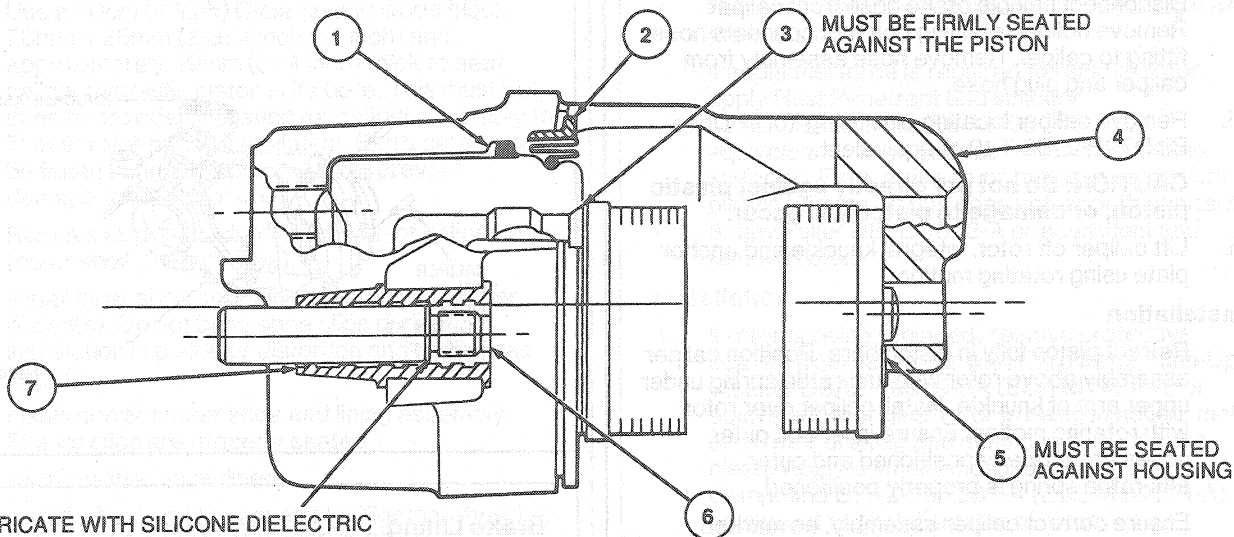


DESCRIPTION (Continued)



LUBRICATE WITH SILICONE DIELECTRIC COMPOUND D7AZ-19A331-A (ESE-M1C171-A) TO FILL THESE FOUR CAVITIES MINIMUM PRIOR TO ASSY OF PIN

H6438-D

| Item | Part Number          | Description  |
|------|----------------------|--|
| 1    | 2B115                | Piston Seal  |
| 2    | 2207                 | Dust Boot  |
| 3    | 2019                 | Inner Brake Shoe Assy (Must be Firmly Seated Against the Piston) |
| 4    | 2B294 RH<br>2B302 LH | Caliper Housing  |

| Item | Part Number         | Description  |
|------|---------------------|--|
| 5    | 2018 RH<br>2C088 LH | Outer Brake Shoe Assy (Must Be Seated Against Housing) |
| 6    | 2B296               | Caliper Locating Pin                                   |
| 7    | 2B299               | Insulator  |

TH6438D

(Continued)

REMOVAL AND INSTALLATION

Service Precautions

- Grease or any other foreign material must be kept off lining surfaces and braking surfaces of rotor, and external surfaces of hub during service operation. In handling rotor and caliper assemblies, avoid deformation, nicking or scratching of brake linings and rotor.
- If a caliper piston is removed for any reason, piston seal and dust boot must be replaced. Exercise care not to damage plastic piston by protecting it from contact with any metal or sharp-edged objects.
- During removal and installation of a wheel assembly, exercise care not to interfere with, or damage caliper splash shield, if so equipped, or the bleeder screw fitting.
- Vehicle must be centered on hoist before servicing any front end components to avoid bending or damaging rotor splash shield, if so equipped, on full right or left wheel turns. Refer to Section 00-02.

- Do not attempt to clean or restore oil or grease-soaked brake lining. When contaminated linings are found, brake linings must be replaced in complete axle sets and rotor braking surfaces wiped clean.
- The LH and RH calipers must be installed on the correct side of the vehicle to be sure bleed is in the topmost position for proper purging of air from the front brake system during bleeding.

Caliper Assembly

Tools Required:

- Torx® Drive Bit D79P-2100-T40

Removal

- Raise vehicle on hoist. Refer to Section 00-02.
- Remove wheel and tire assembly from rotor mounting face. Use care to avoid damage or interference with bleeder screw fitting during removal.
- Mark caliper assembly to ensure it is installed on correct knuckle during installation.