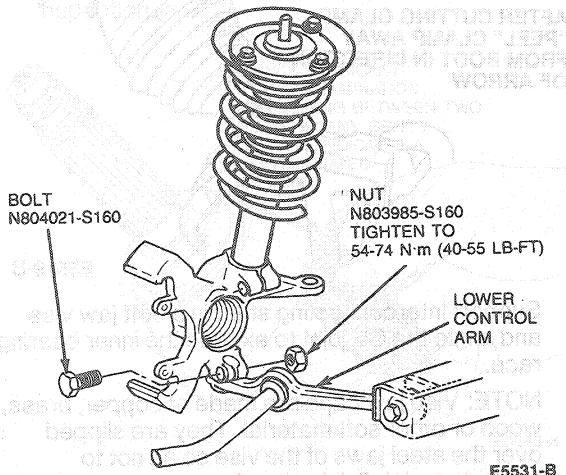


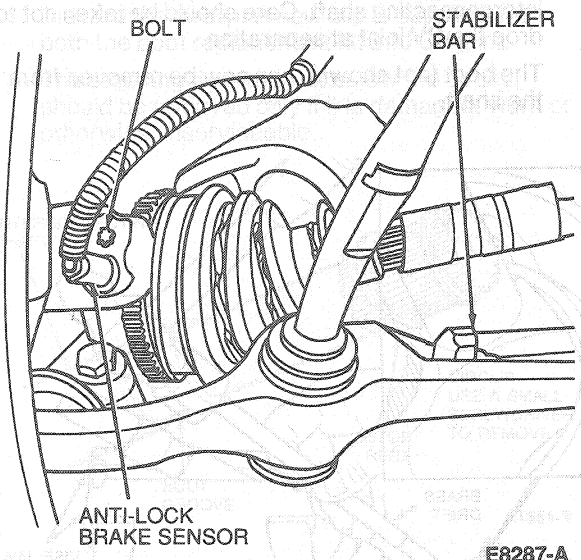
REMOVAL AND INSTALLATION (Continued)

CAUTION: A new bolt and nut must be installed.

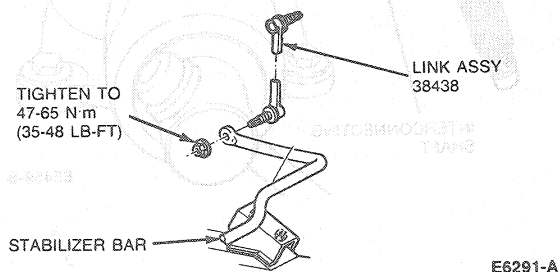
- Connect control arm to the steering knuckle and install a new nut and bolt. Tighten nut to 54-74 N-m (40-55 lb-ft).



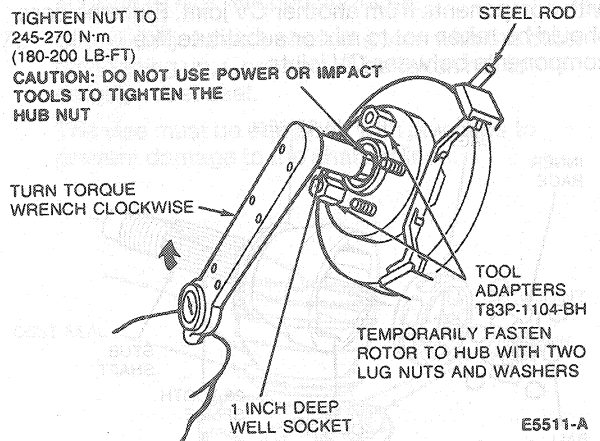
- Install anti-lock brake sensor if equipped.



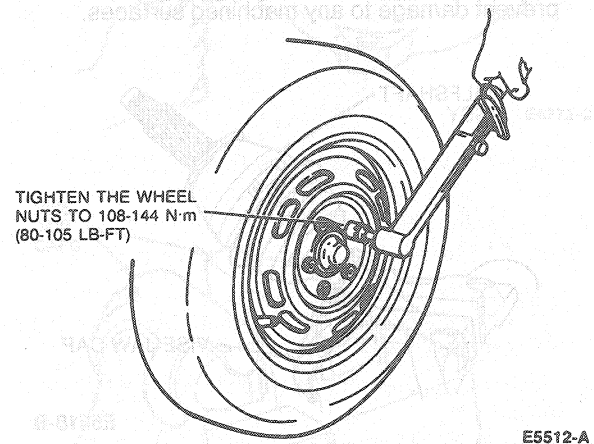
- Connect stabilizer bar link to stabilizer bar. Tighten to 47-65 N-m (35-48 lb-ft).



- Tighten hub retainer nut to 245-270 N-m (180-200 lb-ft).



- Install wheel and tire assembly and lower vehicle.
- Tighten wheel lug nuts to 115-142 N-m (85-105 lb-ft).



- Fill transaxle to proper level with specified lubricant.

AXODE—ESP-M2C185-A MERCON®

Refer to Section 07-02.

MTX—ESP-M2C185-A MERCON®

Refer to Section 07-03 for the Transaxle Fluid Level Check.

DISASSEMBLY AND ASSEMBLY

Outboard CV Joint and Boot

Tools Required:

- Boot Clamp Pliers D87P-1098-A