

ADJUSTMENTS (Continued)

2. If the original tire is to be remounted, index the valve mark on the tire to the valve of the original wheel. Go to Step 6.
If a new wheel is being installed, locate the tire matching point based on the valve position on the original wheel relative to its matching point described in Step 3.
3. Locate the matching point on the wheel.
Steel Wheels: There is either a chartreuse sticker on the outside rim flange, or, if the sticker is missing, a yellow paint mark in the dropwell of the rim that must be transferred to the outside rim flange.
Aluminum Wheels: The matching point on aluminum wheels is at the tire valve.
4. Locating the matching point on a new tire:
Many replacement tires as well as original equipment tires are marked for first harmonic matching to the wheel. These marks vary in type and color. Consult the tire dealer for details on mark identification.
5. Mount the tire on the wheel and line up the chartreuse paint mark or sticker on the new tire sidewall or the matching point of the original tire with the mark on the rim of the steel wheel or the tire valve of the aluminum wheel.
6. Inflate and balance the tire and wheel assembly.

Tire Replacement

Tools Required:

- Rotunda Tire Changer 104-00235

Use the Rotunda Tire Changer 104-00235 or equivalent to mount or dismount tires. Follow the equipment manufacturer's instructions. Do not use hand tools or tire irons alone to change tire as this may cause damage to the tire beads or wheel rim.

Rim bead seats on steel wheels should be cleaned with a wire brush or coarse steel wool to remove lubricants, old rubber and light rust.

Aluminum wheel rim bead seats should be cleaned with a non-abrasive cleaner to remove tire mounting lubricants and old rubber. Before mounting or dismounting a tire, bead area should be well lubricated with Rubber Lubricant D9AZ-19583-A (ESR-M99B135-A) or equivalent.

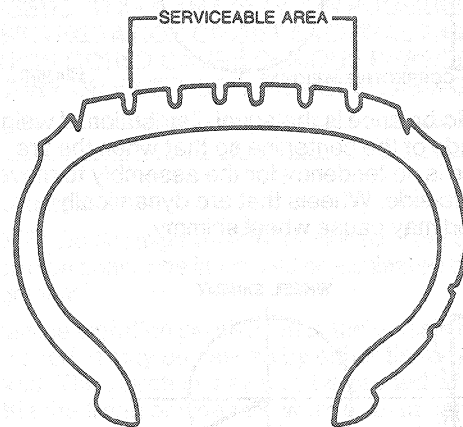
After mounting, inflate the tire so its beads are completely sealed. Install the valve core and inflate the tire to the proper pressure.

Tire Service

Punctured tires should be removed from the wheel and permanently serviced from the inside using a combination service plug and vulcanized patch. When servicing a puncture, always follow the manufacturer's instructions for using the service kit.

Service punctures in the tread area only. Never attempt to service punctures in the tire shoulders or sidewalls. In addition, do not service any tire that has sustained the following damage:

- Bulges or blisters
- Ply separation
- Broken or cracked beads
- Fabric cracks or cuts
- Tires worn to the fabric, or if wear indicators are visible
- Punctures larger than 6.35mm (1/4 inch)



F2691-C

WARNING: TIRE SEALANTS THAT ARE INJECTED THROUGH THE VALVE STEM ARE NOT TO BE USED TO SERVICE PUNCTURED TIRES BECAUSE THEY CAN PRODUCE WHEEL RUST AND CAUSE TIRE IMBALANCE.

Tire and Wheel Balance

There are two types of wheel and tire balance: static and dynamic.