

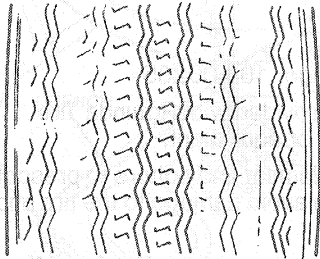
CLEANING AND INSPECTION (Continued)

Tire Sizes

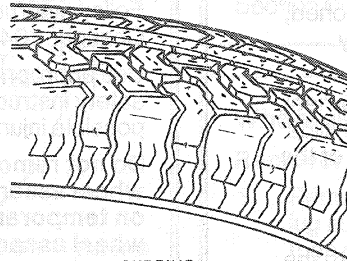
It is mandatory to use only the tire sizes recommended on the tire chart attached to the vehicle. Larger or smaller tires can damage the vehicle and affect durability and may require changing of the speedometer drive gears. Ensure wheel size and offsets match those recommended for the tire in use.

Tire Inspection

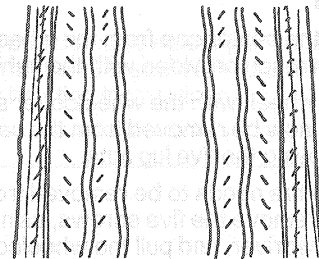
Inspect tires for wear. Abnormal or excessive wear may be caused by incorrect wheel alignment, wheel/tire imbalance, or improper tire pressure.



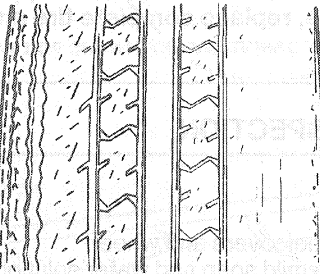
UNDERINFLATION



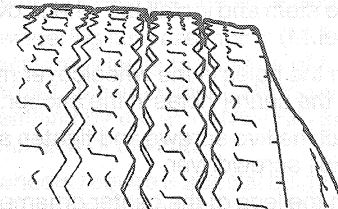
CUPPING



OVERINFLATION



INCORRECT TOE-IN OR EXTREME CAMBER



FEATHERING DUE TO MISALIGNMENT

UNDERINFLATION AND/OR MECHANICAL IRREGULARITIES SUCH AS OUT-OF-BALANCE CONDITION OF WHEEL AND/OR TIRE, AND BENT OR DAMAGED WHEEL. POSSIBLE LOOSE OR WORN STEERING TIE-ROD OR STEERING IDLER ARM. POSSIBLE LOOSE, DAMAGED OR WORN FRONT SUSPENSION PARTS.

F3050-C

Spare Tire

The spare tire and jack are stowed under the rear load floor in sedan, and rear quarter panel in station wagon. Refer to Section 00-02 for information on how the tire, jack and wrench are stowed.

Temporary Spare Tire

The temporary spare tire is lightweight and is for limited mileage, emergency use only. It should be used only until the regular tire is serviced. This tire is identified by the wording TEMPORARY USE ONLY moulded into the tire.

ADJUSTMENTS

Steel Wheels

Wheel services that use welding, heating or peening are not approved. An inner tube is not acceptable service for leaky wheels or tires.

Air Leaks

Tools Required:

- Rotunda Electric Heat Gun 107-00300

If air pressure in an aluminum wheel is low, the following procedure should be performed prior to considering wheel replacement.

1. Remove tire and wheel assembly, and inspect wheel for structural damage. If none exists, go to Step 2. If the wheel is damaged, replace.