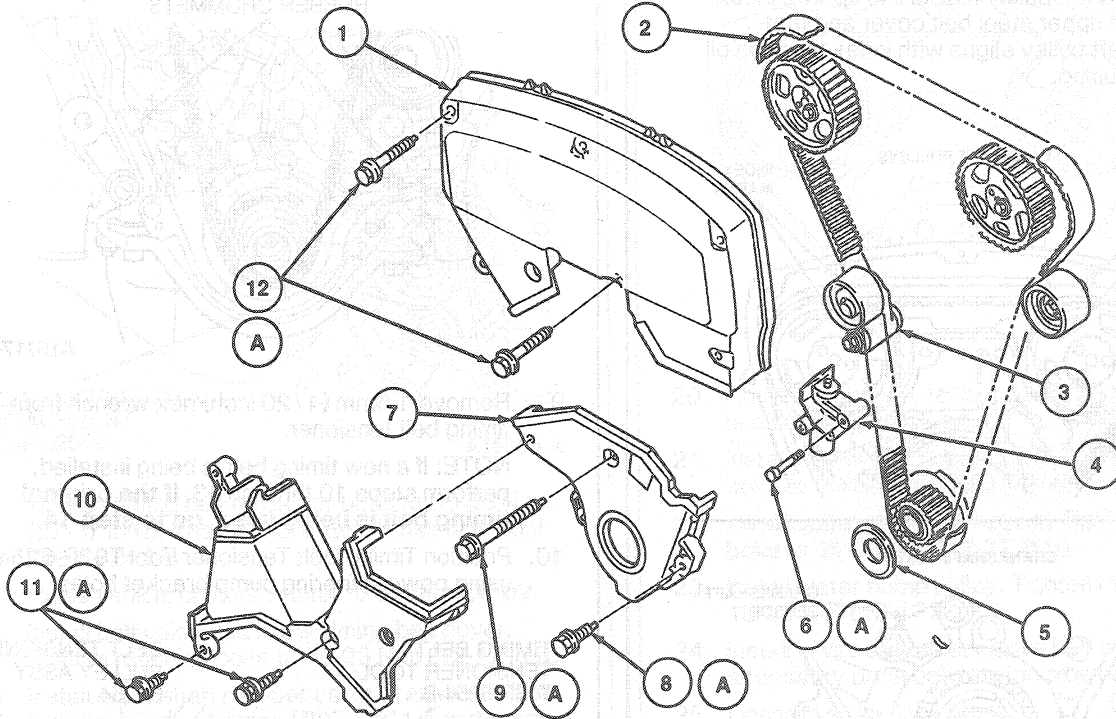


REMOVAL AND INSTALLATION (Continued)

23. Slowly loosen lower timing belt tension bolt and remove tensioner.

24. Lower vehicle.  
25. Remove timing belt.



A16107-A

Item	Part Number	Description
1	6019G	Upper Cover
2	6268B	Timing Belt
3	6K254	Belt Tensioner Pulley Assy
4	6B209	Belt Tensioner
5	6K279	Belt Guide
6A	—	Bolt

Item	Part Number	Description
7	—	Center Cover
8A	—	Bolt (2 Req'd)
9A	—	Bolt
10	6019H	Lower Cover
11A	—	Bolt (3 Req'd)
12A	—	Bolt (8 Req'd)
A	—	Tighten to 16-23 N·m (12-17 Lb·Ft)

(Continued)

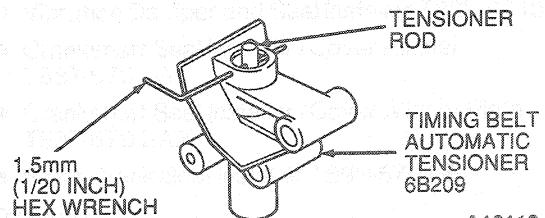
Installation

**CAUTION:** Before installing timing belt, inspect if for cracks, wear or other damage. Replace if damaged. Do not allow timing belt to come in contact with gasoline, oil, water, coolant or steam. Do not turn belt inside out or twist belt.

- Always store belt in a cool dark place.
- Always keep belt in protective packaging until ready for use.
- Never hit or squeeze belt with hammer or screwdriver.

**WARNING:** USE CAUTION WHEN COMPRESSING TIMING BELT TENSIONER IN VISE TO ENSURE THAT TENSIONER DOES NOT SLIP FROM VISE.

1. Slowly compress timing belt tensioner in a soft jawed vise until hole in tensioner housing aligns with hole in tensioner rod.
2. Insert a 1.5mm (1/20 inch) hex wrench through holes.
3. Release tensioner from vise.



A16110-A