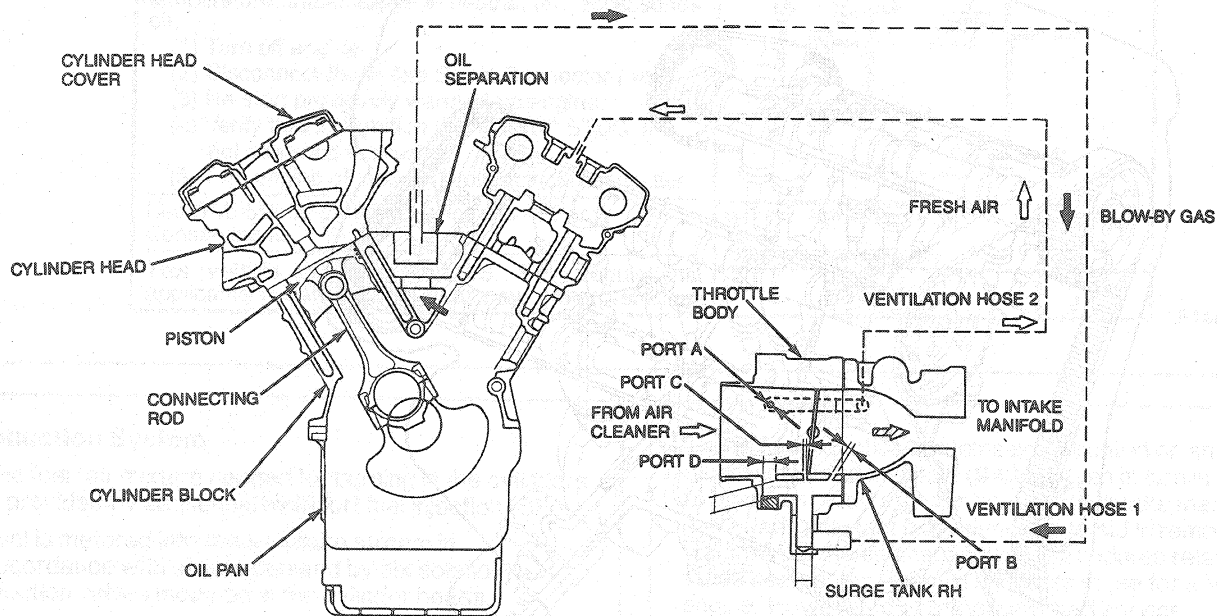


## DESCRIPTION (Continued)

4. At wide open throttle position, the air and crankcase gas mixture flows through ports "B", "C" and "D" into the intake manifold.

At this time, when crankcase gas is excessive, the crankcase gas also flows through port "A" into the intake manifold from the LH cylinder head. The ventilation process goes on continuously while the engine is running.



A12690-B

## REMOVAL AND INSTALLATION

## Engine

## Tools Required:

- Engine Lifting Bracket D89L-6001-A
- Rotunda Hi-Lift Jack 014-00210
- Rotunda Three Bar Engine Support Kit 014-00750

## Removal

1. Drain engine cooling system. Refer to Section 03-03.
2. Disconnect battery cables.
3. Remove battery. Refer to Section 14-01.
4. Remove battery tray assembly.
5. Disconnect wiring connector retaining under hood lamp, if so equipped.
6. Mark position of hood hinges and remove hood.
7. Remove oil level indicator.
8. Disconnect generator and voltage regulator wiring assembly.

9. Remove radiator upper sight shield.
10. Discharge A/C system. Refer to Section 12-00.
11. Remove radiator coolant recovery reservoir assembly.
12. Remove constant control relay module (CCRM).
13. Remove air cleaner hose assembly.
14. Remove upper radiator hose.
15. Remove electric fan and shroud assembly. Refer to Section 03-03.
16. Remove lower radiator hose.
17. Remove radiator assembly. Refer to Section 03-03.
18. Relieve fuel system pressure.
19. Disconnect fuel inlet hose.
20. Disconnect fuel return hose.
21. Remove barometric pressure (BARO) sensor 12A680.