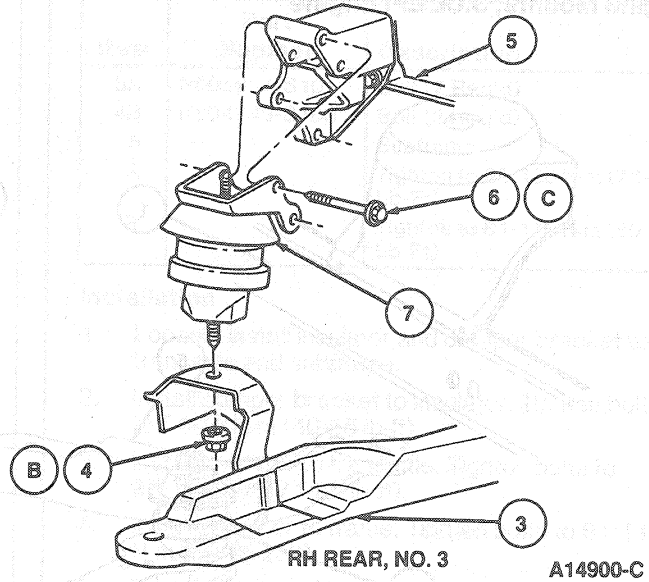
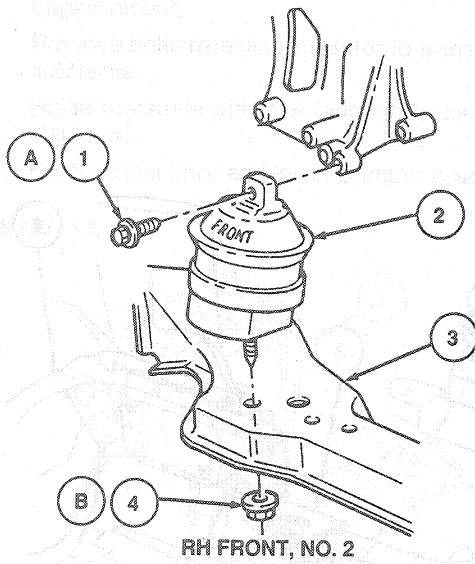


REMOVAL AND INSTALLATION (Continued)



Item	Part Number	Description
1A	N605933-S101	Bolt
2	6038	Insulator
3	—	Subframe
4B	N802978-S150	Nut
5	—	Engine
6C	N804774-S100	Bolt (2 Req'd)

(Continued)

Item	Part Number	Description
7	6D089	Insulator
A		Tighten to 164-173 N·m (120-127 Lb·Ft)
B		Tighten to 75-102 N·m (56-75 Lb·Ft)
C		Tighten to 54-75 N·m (40-55 Lb·Ft)

Installation

1. Attach insulator-to-engine support bracket with two bolts on No. 3 insulator. Tighten bolts to 54-75 N·m (40-55 lb-ft). Attach bolt to No. 2 insulator. Tighten bolt to 164-173 N·m (120-127 lb-ft). Refer to illustration under Removal, Step 5.
2. Lower engine down onto frame.
3. Install nuts retaining RH front and RH rear insulators to frame. Tighten nuts to 75-102 N·m (56-75 lb-ft).
4. Remove jack and lower vehicle.

Insulator, LH and Support Assembly No. 1A**Removal**

1. Raise vehicle on hoist. Refer to Section 00-02.
2. Remove LH tire and wheel.
3. Place jack and wood block in suitable place under transaxle and support transaxle.
4. Remove two nuts retaining insulator to support assembly.
5. Remove two through bolts retaining insulator to frame.

