

DIAGNOSIS AND TESTING (Continued)

Diagnostic Trouble Code 23

Safing Sensor Input Feed/Return Circuit Open

Normal Operation

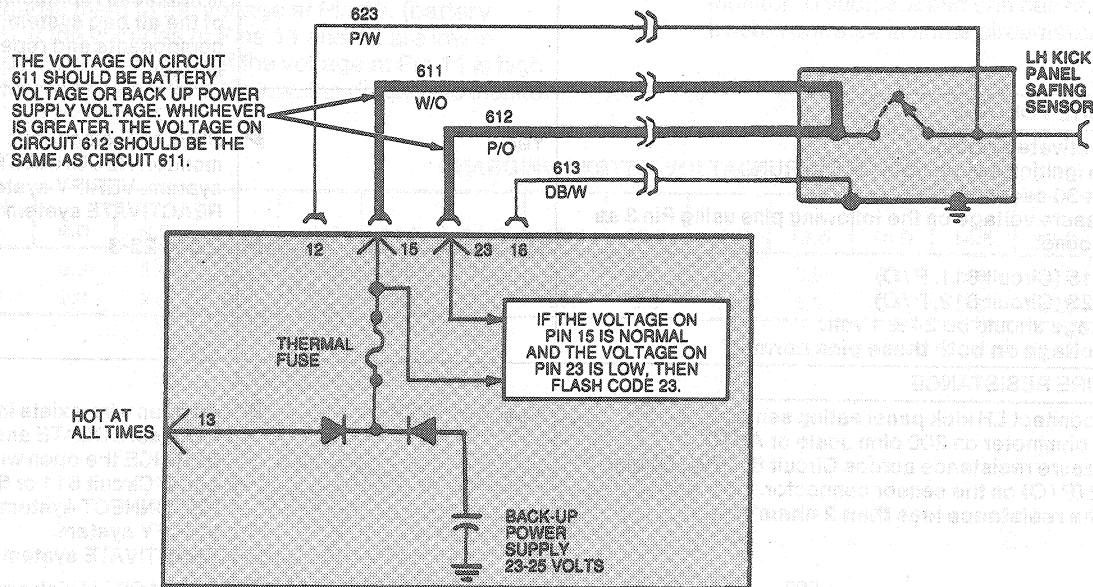
Battery voltage is provided at diagnostic monitor Pin 15 (Circuit 611 (W/O) at all times. However, voltage at Pin 15 can be as high as 25 volts (as provided by the back up power supply) when the ignition switch is in the ON position and the back up power supply in the diagnostic monitor is charged up. Circuit 612 (P/O) is connected to Circuit 611 (W/O) inside the safing sensor. Therefore, the voltage at Pin 23 (Circuit 612) P/O) should be the same as the voltage at Pin 15 at all times. The diagnostic monitor compares the voltage available at Pins 15 and 23. If the voltage at Pin 15 is normal and the voltage at Pin 23 is low, the diagnostic monitor will flash out code 23 to indicate an open between these two circuits.

Possible Causes

Low voltage at Pin 23 can be caused by:

1. An open circuit in the wiring harness in either Circuit 611 (W/O) or 612 (P/O).
2. An open circuit inside the safing sensor across the W/O and P/O wires.

Electrical Schematic—Diagnostic Trouble Code 23



R8063-A