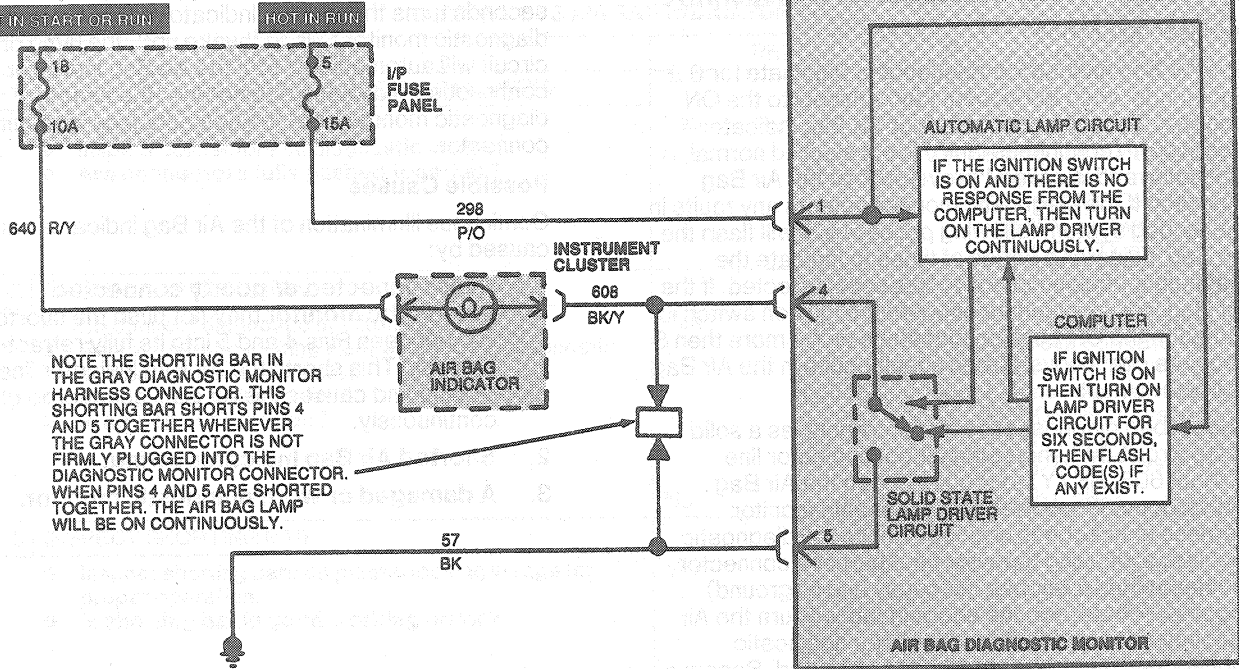


DIAGNOSIS AND TESTING (Continued)

Electrical Schematic—No Air Bag Indicator



R8116-A

Pinpoint Tests—No Air Bag Indicator

NO AIR BAG INDICATOR

TEST STEP	RESULT	ACTION TO TAKE
<b>NAB-1 CHECK FOR IGNITION VOLTAGE</b> <ul style="list-style-type: none"> <li>Deactivate system.</li> <li>Disconnect diagnostic monitor.</li> <li>Turn ignition switch to RUN.</li> <li>Measure voltage between Pins 1 (+) and 3 (-).</li> <li>Is voltage measured equal to battery voltage?</li> </ul>	Yes No	GO to NAB-2. SERVICE open circuit in "HOT IN RUN" Circuit 298 (P/O) from fuse panel. CHECK fuse 5. CHECK for proper ground on Pin 3 of diagnostic monitor connector. RECONNECT system. VERIFY system. REACTIVATE system.
<b>NAB-2 CHECK FOR OPEN LAMP CIRCUIT</b> <ul style="list-style-type: none"> <li>Leave diagnostic monitor disconnected and key ignition switch in RUN.</li> <li>Is air bag indicator on?</li> </ul>	Yes No	REPLACE diagnostic monitor. RECONNECT system. VERIFY system. REACTIVATE system. LOCATE and SERVICE open circuit in air bag indicator circuitry. CHECK for burned out bulb, blown fuse 18, open connections, pushed out pins, etc. RECONNECT system. VERIFY system. REACTIVATE system.