

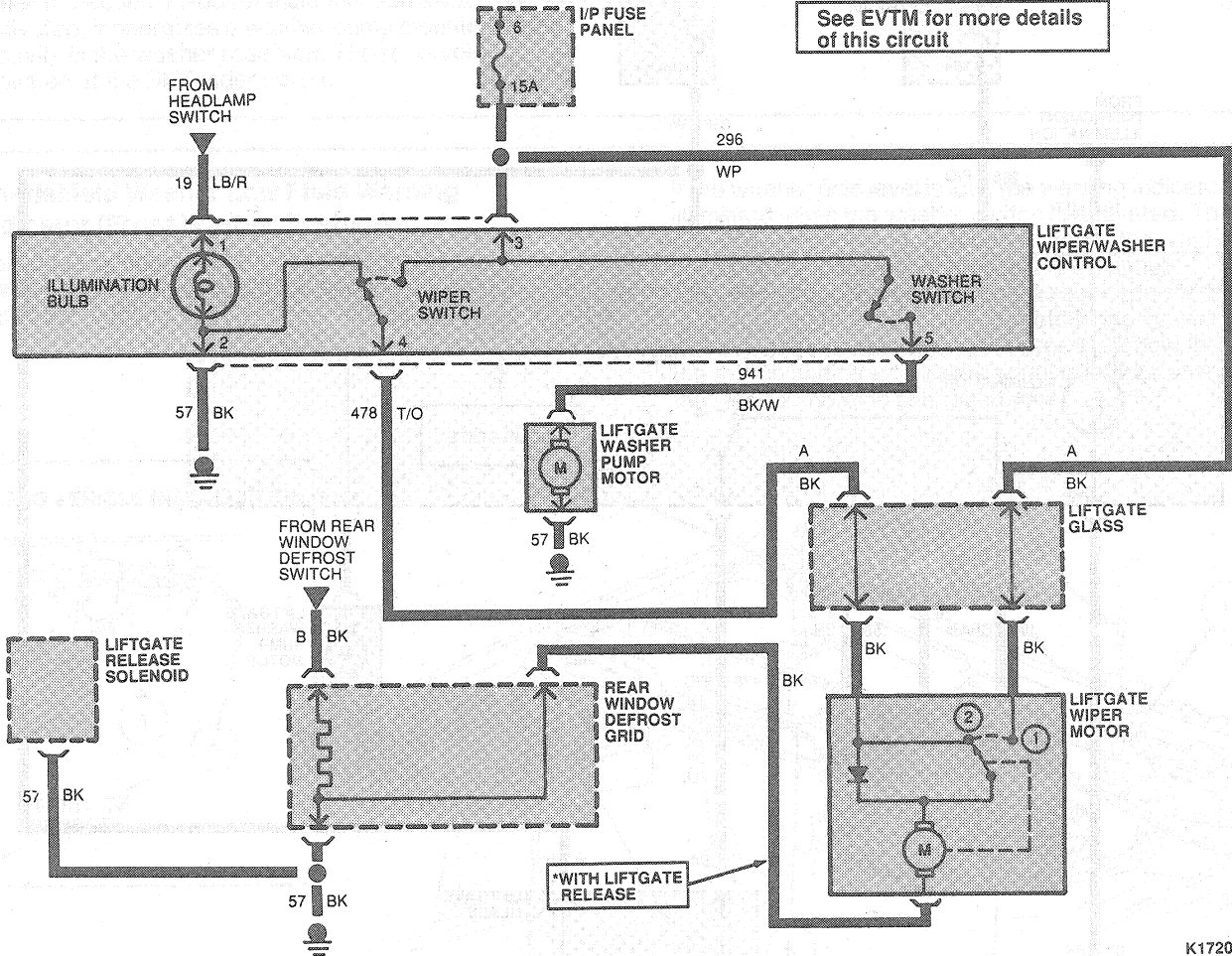
DESCRIPTION AND OPERATION (Continued)

Taurus System

The wiper system is a low-voltage system that uses 12V DC. The wiper system is controlled by the Wiper Switch and Washer Switch. The Wiper Switch controls the Wiper Motor and the Washer Switch controls the Washer Motor. The Wiper Motor is powered by the Wiper Pump (WP) and the Washer Motor is powered by the Washer Pump (WP). The Wiper Motor is connected to the Wiper Motor terminals (1 and 2) and the Washer Motor is connected to the Washer Motor terminals (3 and 4). The Wiper Motor is controlled by the Wiper Switch and the Washer Motor is controlled by the Washer Switch. The Wiper Motor is powered by the Wiper Pump (WP) and the Washer Motor is powered by the Washer Pump (WP). The Wiper Motor is connected to the Wiper Motor terminals (1 and 2) and the Washer Motor is connected to the Washer Motor terminals (3 and 4). The Wiper Motor is controlled by the Wiper Switch and the Washer Motor is controlled by the Washer Switch.

HOT IN ACC OR RUN

See EVTSM for more details of this circuit



K17204-A