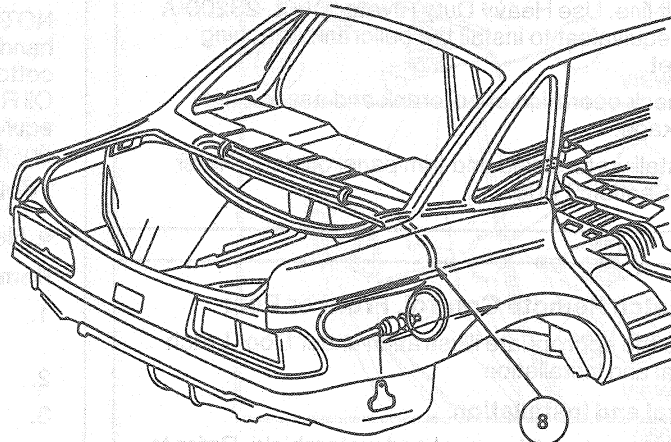
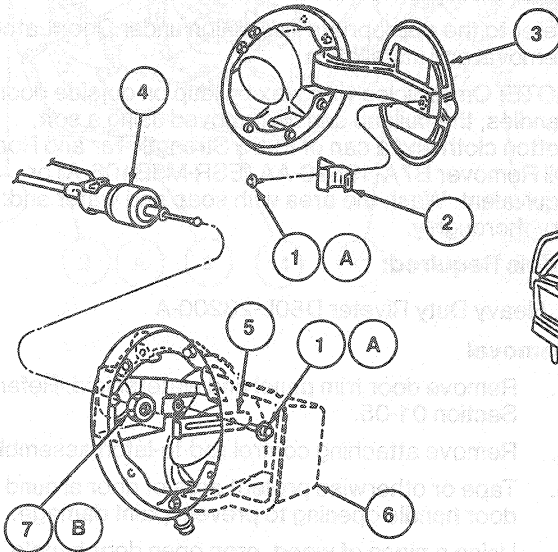


REMOVAL AND INSTALLATION (Continued)

Latch and Cable, Fuel Filler Door Remote**Removal and Installation**

1. Remove LH package tray speaker cover from luggage compartment (Sable).
2. Reach inside and remove clip retaining head restraint (Sable).
3. Remove head restraint (Sable).
4. Remove rear seat and seat back.
5. Remove LH center body pillar inside finish panel and front door scuff plate.
6. Remove screw and pin from fuel filler door.
7. Remove three push pins and remove floor carpet support.
8. Position carpet and insulator aside.
9. Remove two screws and remove fuel filler remote release assembly.
10. Turn fuel filler remote release over and disconnect fuel filler cable.
11. Pull cable out from plastic cover holding the wire harness in place along the floor and C-pillar.
12. Pull cable from inside of luggage compartment.
13. Pull cable out of clips holding it in place behind the package tray in the luggage compartment.
14. Remove the RH luggage compartment cover assembly.
15. Remove clip holding cable to quarter panel extension.
16. Open fuel filler door.
17. Remove screw retaining door latch spring to fuel housing filler pipe assembly.
18. Disconnect spring from latch assembly.
19. Remove nut retaining latch assembly to housing.
20. Reach into luggage compartment and remove cable.
21. To install, reverse Removal procedure.



N8436-C

Item	Part Number	Description
1A	N805062-S55	Screw and Washer Assy (1 Req'd)
2	405B98	Door Assist Spring Assy
3	—	Door Assy Fuel Filler Opening
4	28610	Fuel Filler Door Latch Assy

(Continued)

Item	Part Number	Description
5	405C18	Door Latch Spring
6	—	Fuel Tank Filler Housing
7B	N620042-S36	Nut (1 Req'd)
8	28610	Latch Assy
A		Tighten to 2.7-3.7 N·m (24-32 Lb-in)
B		Tighten to 4-5.6 N·m (36-49 Lb-in)

Door Striker**Tools Required:**

- Torx® Drive Bit Set D79P-2100-T