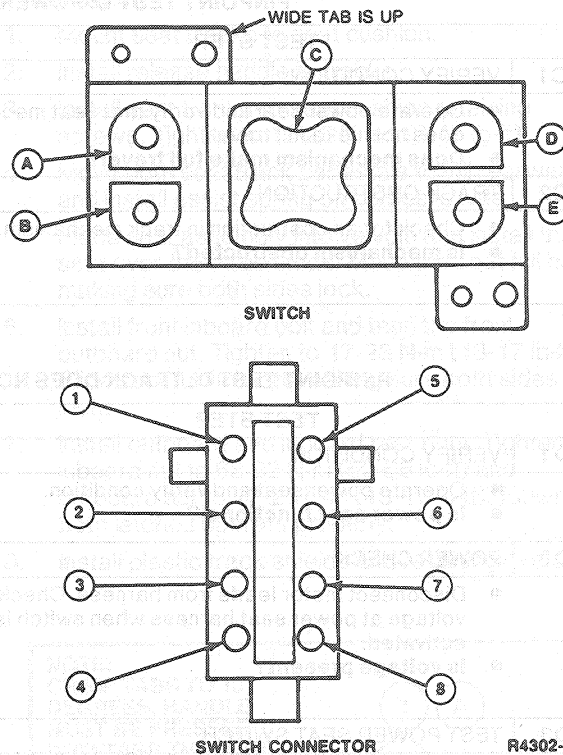


TESTING (Continued)

10. If any part of the switch fails to test as outlined, replace the entire switch assembly.



DIAGNOSIS

Refer to the following diagnosis charts for conditions encountered in the power seat system.

PINPOINT TEST A: POWER SEAT MOVES—NOISY OPERATION

TEST STEP		RESULT	ACTION TO TAKE
A1	VERIFY CONDITION		
	<ul style="list-style-type: none"> Operate power seat and listen for noise. Is there noise present? 	Yes No	Power seat OK. REPLACE motor and transmission assembly.

TR6589C

PINPOINT TEST B: POWER SEAT MOVES BUT IS LOOSE

TEST STEP		RESULT	ACTION TO TAKE
B1	VERIFY CONDITION		
	<ul style="list-style-type: none"> Operate power seat and check for looseness. Is power seat loose? 	Yes No	TIGHTEN all attachment hardware. GO TO B2. Power seat OK.
B2	CHECK SEAT OPERATION		
	<ul style="list-style-type: none"> Check if loose condition has been corrected. Has looseness been corrected? 	Yes No	Power seat OK. REPLACE track assembly.

TR3539D