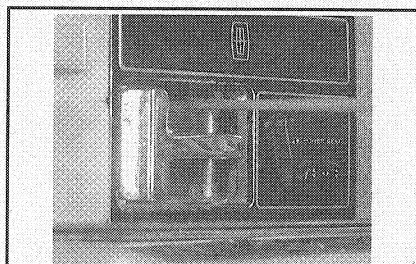


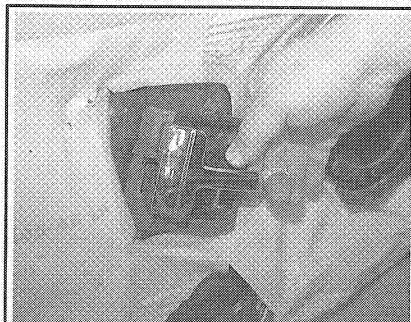
93140P28

**Fig. 52** Remove the access panel by prying it across the top and then lifting it up to clear the retaining tabs



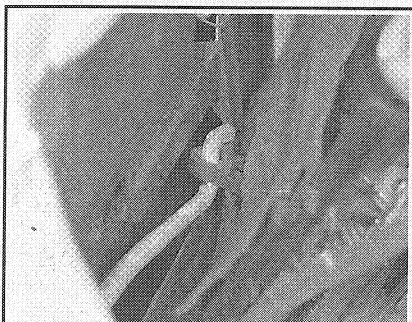
93140P29

**Fig. 53** If the inside door handle seems to stick out too far, it's probably broken. It is not necessary to remove the entire door panel to repair the handle. Unfasten the retaining screw



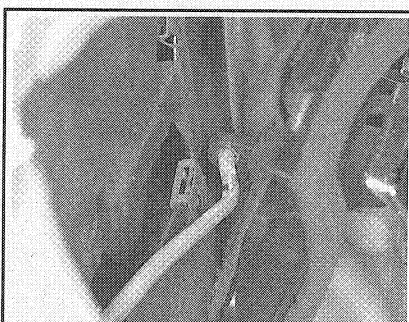
93140P20

**Fig. 54** We have removed the door panel for photo clarification. Pull the door handle forward and out of its seat



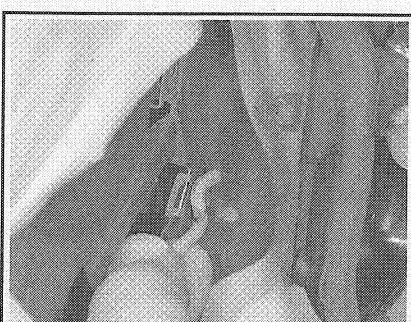
93140P17

**Fig. 55** Slide the door handle off the connecting rod . . .



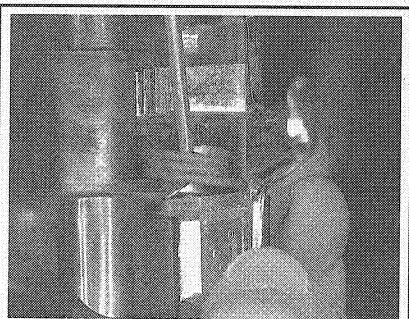
93140P22

**Fig. 56** . . . being careful not to allow the rod . . .



93140P19

**Fig. 57** . . . to snap out of your hand and drop inside the door



93140P15

**Fig. 58** This door handle has a broken return spring and needs to be replaced

4. Check all rod connections. Correct any disconnected or loose connections and check operation before replacing parts.

5. Disconnect the rods from the latch. The remote link and the latch-to-lock cylinder rod cannot be removed because of the rod's end configuration.

6. Remove the lock cylinder rod from the lock cylinder lever.

7. Remove the power actuator, power rod, and clip, if equipped.

8. Remove the door latch remote control.

9. Remove the latch assembly retaining screws. Disconnect the door indicator switch wire, if equipped, and remove the latch from the door.

10. Remove the anti-theft shield from the latch.

11. Remove the remote link, the latch-to-lock cylinder rods, and the door indicator switch from the latch where applicable.

**To install:**

12. Install new rod retaining clips and grommets in the new latch assembly, using the removed latch as a guide.

13. Position the door indicator switch to the latch and install the attaching screw. Install the anti-theft shield to the latch.

14. Install the remote link and the latch-to-lock cylinder rod.

15. Position the latch in the door and connect the wire to the door indicator switch. Install the latch and retaining screws with the anti-theft shield. Tighten to 3-6 ft. lbs. (4-8 Nm).

16. Install the door latch remote control.

17. Connect the latch-to-lock cylinder rod to the lock cylinder lever, manual lock rod and power lock rod, if equipped.

18. Connect the outside release rod to the latch and check latch operation.

19. Install the rear glass run lower attaching bolt in the original position.

20. Install the door trim panel and watershield.

**Rear Door Latch**

▶ See Figures 59 and 60

1. Remove the door trim panel and watershield.

2. Disconnect the door latch-actuating rod from the latch assembly.

3. Remove the rear door latch bellcrank.

4. Remove the door latch remote control.

5. Disconnect the power lock rod, if equipped.

6. Remove the three latch assembly retaining screws.

7. Disconnect the wire from the door indicator switch, if equipped, and remove the latch assembly from the door.

8. Remove the door indicator switch from the latch assembly and remove the 2 link assemblies from the latch.

**To install:**

9. Install new clips and grommets in the new latch assembly, using the removed latch as a guide.

10. Install the door indicator switch on the latch assembly.

11. Install the 2 link assemblies into the lower lever grommets.

12. Connect the power lock rod, if equipped.

13. Position the latch assembly on the door and connect the wire to the door indicator switch, if equipped.

14. Install the 3 retaining screws.

15. Connect the door latch-actuating rod to the latch assembly.

16. Install the door latch bellcrank and remote control.

17. Check latch operation, then install the door panel and watershield.