

Fig. 63 Use a suitable size flare nut wrench to . . .

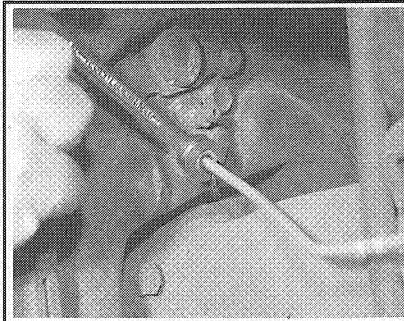


Fig. 64 . . . loosen the brake line fitting on the wheel cylinder

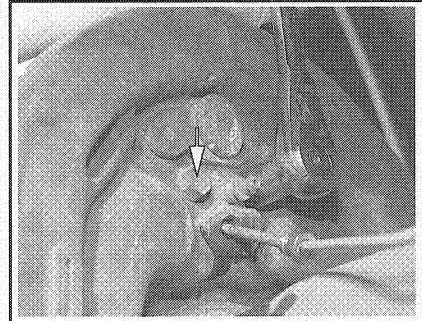


Fig. 65 Remove the wheel cylinder retaining bolts and . . .

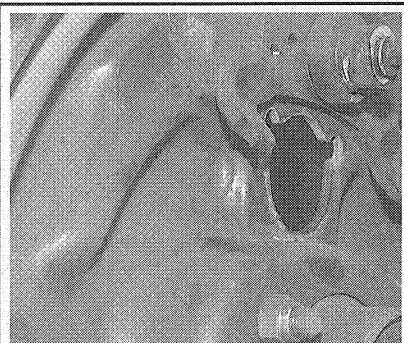


Fig. 66 . . . remove the wheel cylinder from the backing plate

eyes, flush your eyes with clean, running water for 15 minutes. If eye irritation persists, or if you have taken brake fluid internally, IMMEDIATELY seek medical assistance.

8. Disconnect the brake line at the wheel cylinder.

9. Remove the 2 bolts securing the wheel cylinder to the backing plate and remove the wheel cylinder.

To install:

10. Reinstall the wheel cylinder to the brake backing plate and install the 2 retaining bolts. Torque the retaining bolts to 84–108 inch. lbs. (10–13 Nm).

11. Reconnect the brake line to the wheel cylinder and torque the fitting to 10–18 ft. lbs. (14–24 Nm).

12. Lubricate the rear brake shoe contact points on the backing plate with an appropriate grease.

13. Install the brake shoes.

14. Make sure that the brake drum and brake shoes are clean of any oils or protective coatings.

15. Reinstall the brake drum.

16. Bleed the brake system of air until a firm pedal is achieved. Top off the brake fluid in the master cylinder.

WARNING

Clean, high quality brake fluid is essential to the safe and proper operation of the brake system. You should always buy the highest quality brake fluid that is available. If the brake fluid becomes contaminated, drain and flush the system, then refill the master cylinder with new fluid. Never reuse any brake fluid. Any brake fluid that is removed from the system should be discarded. Also, do not allow any brake fluid to come in contact with a painted surface; it will damage the paint.

17. Reinstall the wheel and tire assembly.
18. Lower the vehicle.
19. Pump the brake pedal several times to assure a good pedal.
20. Road test the vehicle and check the brake system for proper operation.

PARKING BRAKE

Brake Shoes (Parking)

REMOVAL & INSTALLATION

♦ See Figures 67 and 68

1. Raise and safely support the vehicle.
2. Remove the rear axle shaft; refer to Section 7.
3. Disconnect the brake cable from the lever.
4. Remove the brake shoe retaining springs and pins.
5. Set the adjuster assembly to the shortest length. Pull the shoes away from the backing plate slightly and spread them enough to remove the adjuster assembly.
6. Remove the upper return (adjuster) spring.
7. Lift the shoes over the support and remove the shoes and actuating lever as an assembly. Make sure the lever does not damage the boot or pull the boot out of position.
8. Disassemble the shoes, lever and springs.

To install:

9. Install the lower return springs and actuating lever to the brake shoes.

10. Make sure the boot is properly positioned in the backing plate. Install the shoes by first inserting the lever through the boot, then lowering the shoes into position.

11. Install the upper return (adjuster) spring and install the adjuster assembly.

12. Install the brake shoe retaining springs and pins.

13. Connect the brake cable to the lever.

14. Install the rear axle shaft.

15. Center the brake shoes on the backing plate. Using an 8-in. micrometer or calipers, gauge the brake shoes.

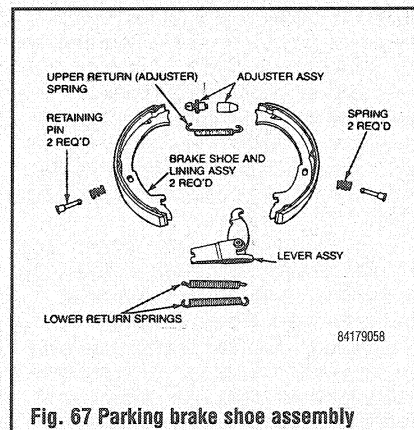


Fig. 67 Parking brake shoe assembly

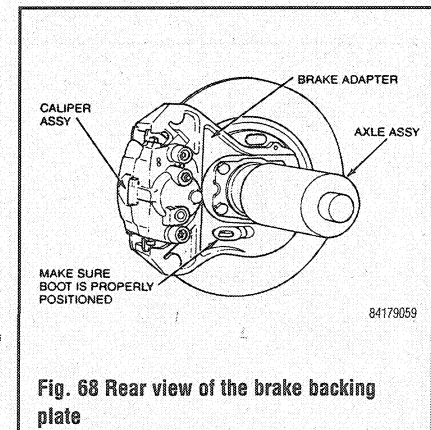


Fig. 68 Rear view of the brake backing plate