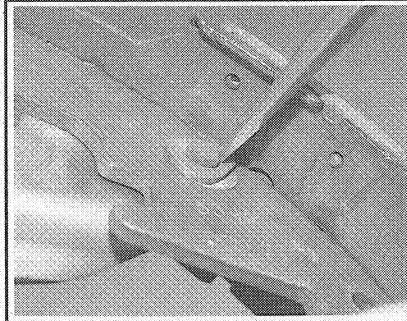


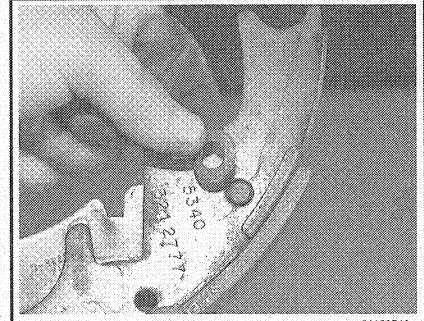
91199P16

Fig. 53 . . . lift the secondary shoe from the backing plate



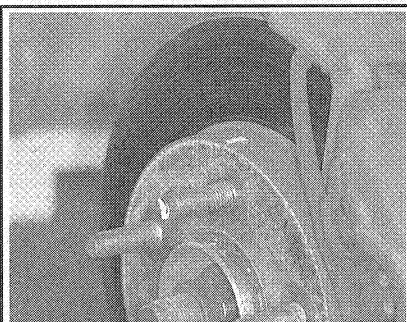
91199P17

Fig. 54 Remove the parking brake lever horseshoe clip and . . .



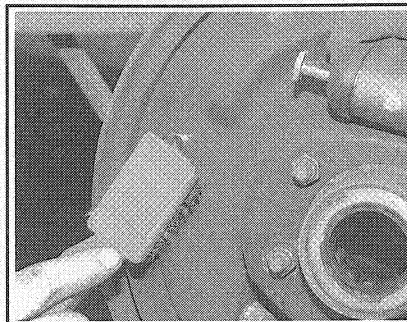
91199P18

Fig. 55 . . . remove the washer from under the horseshoe clip



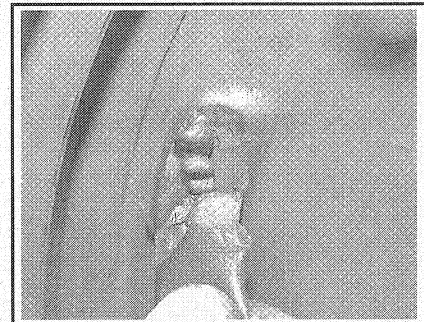
91199P19

Fig. 56 Remove the secondary brake shoe from the parking brake lever



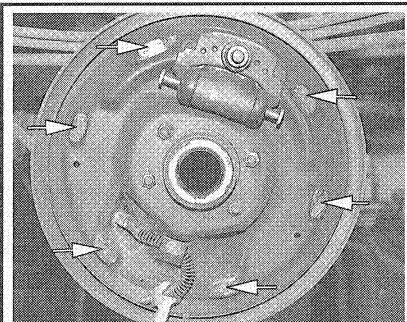
91199P20

Fig. 57 Thoroughly clean and . . .



91199P21

Fig. 58 . . . lubricate the . . .



91199P22

Fig. 59 . . . shoe contact points on the backing plate

spring. Remove the primary shoe-to-anchor spring and unhook the cable anchor. Remove the anchor pin plate.

7. Remove the cable guide from the secondary shoe.

8. Remove the shoe hold-down springs, shoes, adjusting screw, pivot nut, and socket. Note the color of each hold-down spring for assembly. To remove the hold-down springs, reach behind the brake backing plate and place one finger on the end of one of the brake hold-down spring mounting pins. Using a pair of pliers, grasp the washer type retainer on top of the hold-down spring that corresponds to the pin which you are holding. Push down on the pliers and turn them 90° to align the

slot in the washer with the head on the spring mounting pin. Remove the spring and washer retainer and repeat this operation on the hold down spring on the other shoe.

9. Remove the parking brake link and spring. Disconnect the parking brake cable from the parking brake lever.

10. After removing the rear brake secondary shoe, disassemble the parking brake lever from the shoe by removing the retaining clip and spring washer.

To install:

11. Assemble the parking brake lever to the secondary shoe and secure it with the spring washer and retaining clip.

12. Apply a light coating of Lubriplate®, or equivalent, at the points where the brake shoes contact the backing plate.

13. Position the brake shoes on the backing plate, and install the hold-down spring pins, springs, and spring washer type retainers. On the rear brake, install the parking brake link, spring and washer. Connect the parking brake cable to the parking brake lever.

14. Install the anchor pin plate, and place the cable anchor over the anchor pin with the crimped side toward the backing plate.

15. Install the primary shoe-to-anchor spring with the brake tool.

16. Install the cable guide on the secondary shoe web with the flanged holes fitted into the hole in the secondary shoe web. Thread the cable around the cable guide groove.

17. Install the secondary shoe-to-anchor (long)

spring. Be sure that the cable end is not cocked or binding on the anchor pin when installed. All of the parts should be flat on the anchor pin. Remove the wheel cylinder piston clamp.

18. Apply Lubriplate®, or equivalent, to the threads and the socket end of the adjusting star-wheel screw. Turn the adjusting screw into the adjusting pivot nut to the limit of the threads and then back off ½ turn.

↔ **Interchanging the brake shoe adjusting screw assemblies from one side of the vehicle to the other would cause the brake shoes to retract rather than expand each time the automatic adjusting mechanism is operated. To prevent this, the socket end of the adjusting screw is stamped with an "R" or an "L" for "RIGHT" or "LEFT". The adjusting pivot nuts can be distinguished by the number of lines machined around the body of the nut; one line indicates left hand nut and two lines indicate a right hand nut.**

19. Place the adjusting socket on the screw and install this assembly between the shoe ends with the adjusting screw nearest to the secondary shoe.

20. Place the cable hook into the hole in the adjusting lever from the backing plate side. The adjusting levers are stamped with an **R** (right) or a **L** (left) to indicate their installation on the right or left hand brake assembly.

21. Position the hooked end of the adjuster spring in the primary shoe web and connect the loop end of the spring to the adjuster lever hole.

22. Pull the adjuster lever, cable and automatic