

6-24 CHASSIS ELECTRICAL

7. Install the headlight door and secure with the screws.
8. Check the headlight bulb aim and adjust as necessary.

All Vehicles With Halogen Bulbs

♦ See Figures 57 thru 65

1. Make sure the headlight switch is in the OFF position.
2. Lift the hood and remove the trim panel located above the headlight bulb, where necessary.
3. Rotate the bulb retainer counterclockwise (when viewed from the rear) about an 1/8-1/4 turn.
4. Carefully remove the bulb from the socket in

the reflector by gently pulling straight out of the socket. Do not rotate the bulb during removal.

5. Detach the electrical connector from the bulb.
- To install:**
6. Attach the electrical connector to the bulb.
7. Insert the glass envelope of the bulb into the socket while aligning the locking tabs.
8. Rotate the bulb retainer 1/4 turn to lock it in.
9. Turn the headlights on and check for proper operation.

⇒ **A properly aimed headlight normally does not need to be re-aimed after bulb installation. A burned out bulb should not be removed from the headlight reflector until just before a replacement bulb is to be installed. Removal of a bulb for an extended period of time may**

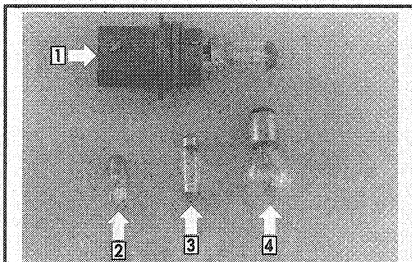
allow contaminants to enter the headlight body and affect the performance of the headlight. The headlight bulb should be energized only while it is contained within the headlight body.

AIMING THE HEADLIGHTS

♦ See Figures 66, 67 and 68

On 1989-91 vehicles, the headlights can be aimed using the adjusting screws located above and to the side of the headlight bulbs. A rough adjustment can be made while shining the headlights on a wall or on the rear of another vehicle, but headlight adjustment should really be made using proper headlight aiming equipment.

On 1992-98 vehicles, the aerodynamically styled



1. Halogen headlight bulb
2. Side marker light bulb
3. Dome light bulb
4. Turn signal/brake light bulb

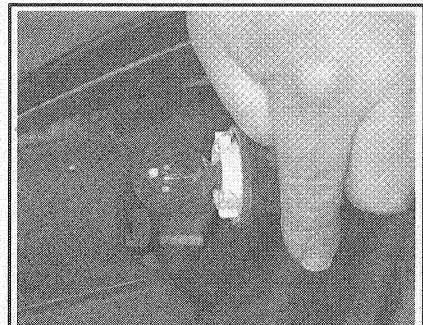
TCCA6P11

Fig. 57 Examples of various types of automotive light bulbs



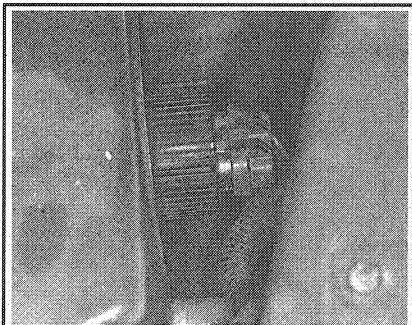
93146P59

Fig. 58 This is the view of the headlamp assembly looking straight down in front of the radiator support. There is not a great deal of clearance to work in this vicinity, but it is manageable



93146P58

Fig. 59 You can get the front turn signal bulb out by giving it a half-twist



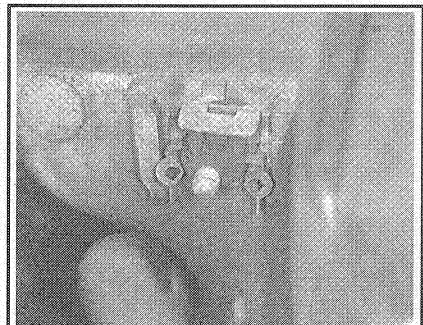
93146P56

Fig. 60 Removing the locking ring on the headlamp halogen bulb . . .



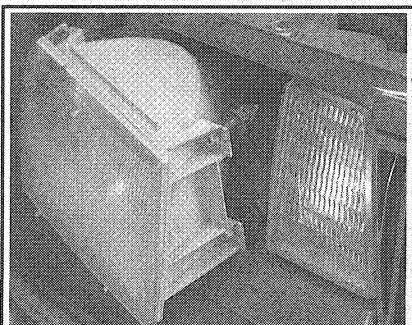
93146P57

Fig. 61 . . . allows you to unplug the bulb



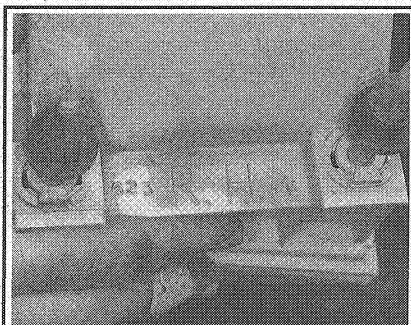
93146P55

Fig. 62 This is the view of the headlamp housing from the back. Notice the locking clip



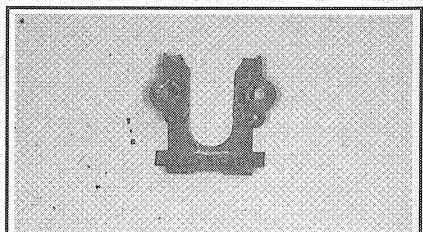
93146P54

Fig. 63 The locking clip can be removed to facilitate easy removal of the headlamp assembly



93146P53

Fig. 64 The headlamp assemblies are marked for left or passenger side installation. This one is passenger side



93146P52

Fig. 65 The retaining clip removal and installation is accomplished with a special tool. If the clips are in good shape, they can be removed with an inside snap ring pliers. But be ready to replace them if they distort