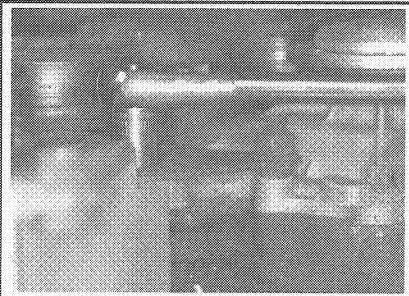


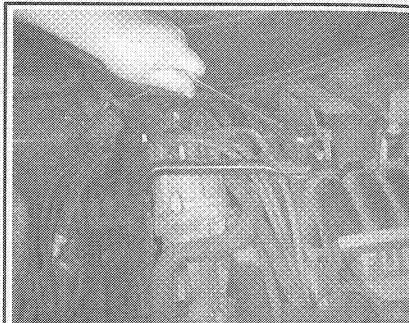
93143P14

Fig. 77 Removing the lower hose



93143P26

Fig. 78 This bolt and the attaching bracket must also be removed to access the water pump. Be sure to get the right one, they are difficult to see



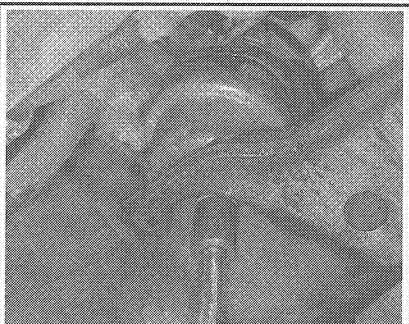
93143P28

Fig. 79 Remove the nut holding the top of this support bar . . .



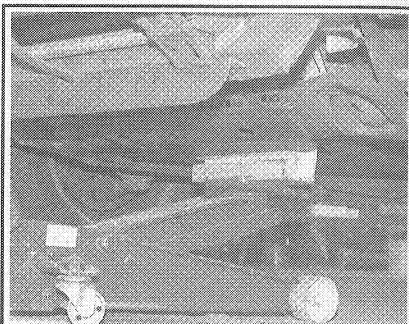
93143P29

Fig. 80 . . . and the bottom mounted nut to get the support bar out of the way, and give you access to the water pump bolts



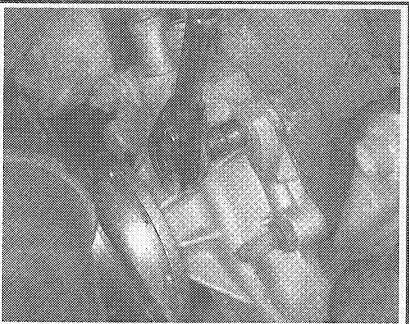
93143P91

Fig. 81 Loosen the bottom nut on the front motor mount; remove it if necessary



93143P90

Fig. 82 Place a piece of wood on the jack to protect the oil pan and jack up the engine about 4 or 5 inches



93143P30

Fig. 83 There are two different size bolts holding the water pump to the block



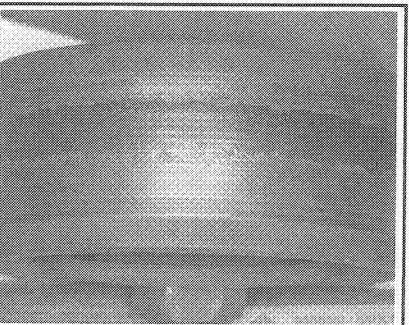
93143P10

Fig. 84 This long bolt has to be removed to remove the water pump. You will have to lift the engine slightly to slide the bolt out freely



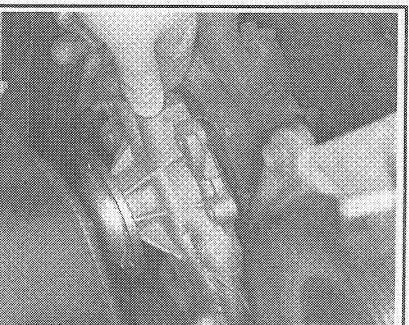
93143P89

Fig. 85 Retaining the idler pulley on this engine is the single bolt through the center



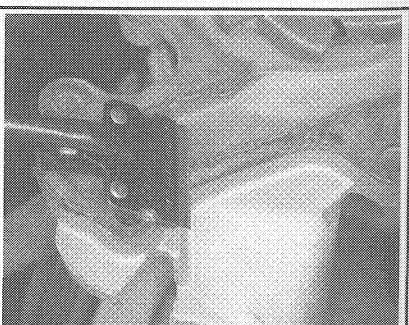
93143P24

Fig. 86 If the idler pulley on your car looks like this, replace it. Replace the serpentine belt along with it



93143P16

Fig. 87 Pull the water pump away from the engine block



93143P11

Fig. 88 Scrape the gasket area clean. A razor scraper works well, but use it carefully