

Traction-Lok equipped vehicles, add 5 oz. (118 ml) of Ford Friction Modifier or equivalent meeting Ford Specifications.

## LEVEL CHECK

♦ See Figures 160, 161, 162, 163 and 164

Checking the differential fluid level is generally unnecessary unless a leak is suspected.

1. Raise and safely support the vehicle on jackstands.
2. Remove the oil fill plug from the differential housing. The hex drive on a  $\frac{3}{8}$  in. drive ratchet, breaker bar or extension works well on some applications.
3. Insert a finger into the fill hole; be careful as

the threads can be sharp. The oil level should be about  $\frac{1}{4}$  in. below the bottom of the fill hole with the axle in normal running position.

4. If the oil level feels low, add oil through the fill hole. Most hypoid gear oil comes in squeeze bottles equipped with small fill nozzles, designed for this purpose.

5. When the oil level is correct, install the oil fill plug and tighten to 15–30 ft. lbs. (20–41 Nm).

## DRAIN AND REFILL

♦ See Figures 165 thru 171

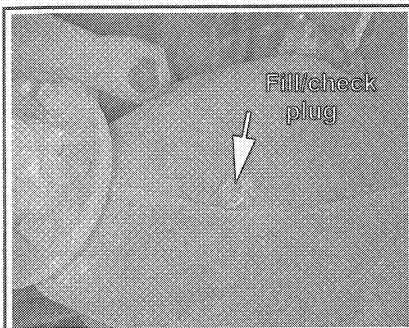
The differential should be drained and refilled every 100,000 miles or if the axle has been submerged in water.

1. Raise and safely support the vehicle on jackstands.
2. Clean all dirt from the area of the differential cover.

3. Position a drain pan under the differential.  
4. Remove all but 2 cover retaining bolts and allow the fluid to drain from the differential. Once the fluid has drained, remove the remaining bolts to free the cover.

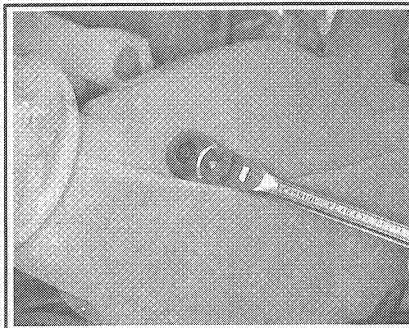
5. Thoroughly clean the differential cover. Cover the differential carrier with a clean rag to prevent axle contamination, then clean all the old sealant from the machined surface of the differential housing.

6. Make sure the machined surfaces of the cover and differential are clean and free of oil. Apply a  $\frac{1}{4}$  in. wide bead of silicone sealer around the cir-



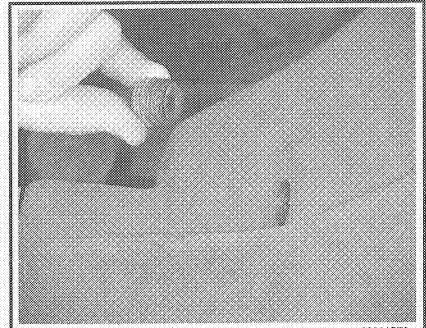
89601P74

**Fig. 160** The check/fill plug location—rear axle



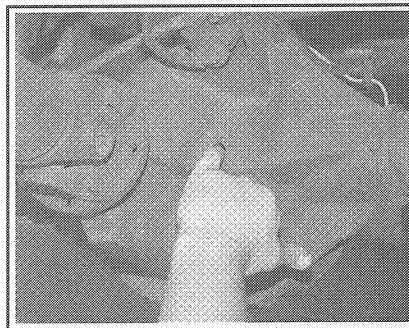
89601P75

**Fig. 161** Loosen the check/fill plug with a  $\frac{3}{8}$  drive tool and . . .



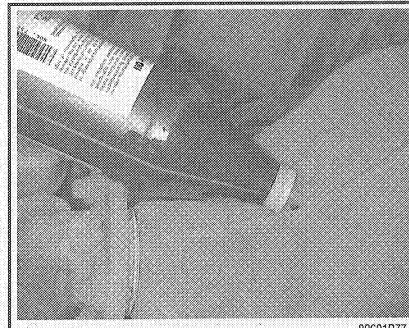
89601P76

**Fig. 162** . . . remove the check/fill plug



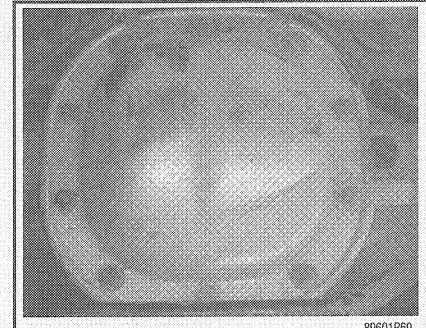
91191P75

**Fig. 163** Check the fluid level by placing a finger into the hole—rear axle



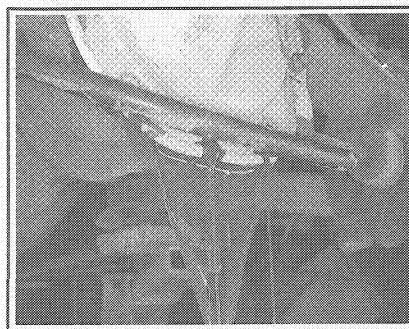
89601P77

**Fig. 164** Add the proper lubricant into the differential through the check/fill plug location



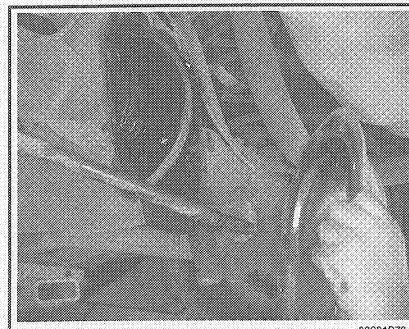
89601P69

**Fig. 165** Remove the axle cover retaining bolts



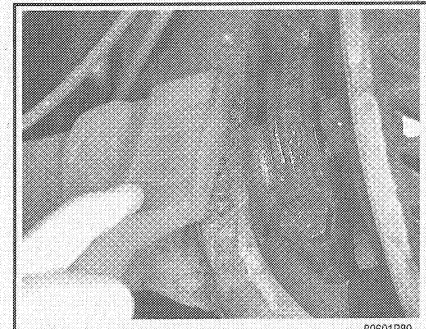
89601P71

**Fig. 166** After the cover bolts are removed, carefully pry the cover loose so that fluid begins to drain out the bottom



89601P73

**Fig. 167** After most of the fluid has drained out, remove the cover from the axle



89601P80

**Fig. 168** Thoroughly clean the axle housing and . . .